



National Fire Equipment Ltd.

SMALL MOUTH TOP BEAM CLAMP #406

3/8" through 7/8"

Malleable Iron* c/w hardened steel cup point set screw

Bare Metal

U.L. - U.L.C. listed 3/8 and 1/2 (1/2 for 4" IPS max).

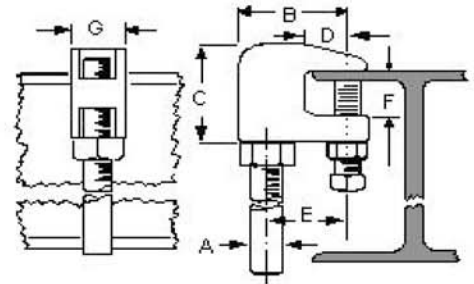
FM approved for 3/8" only.

Complies with Manufacturers' Standardization Society
MSS SP-58 and SP-69 (Type 19)

Recommended for use under roof installations with
bar joist type construction where flange thickness does
not exceed 5/8 inch.

Specify rod size, figure number, name and finish.

Also available in Electro-Plated Zinc and Stainless Steel**



** Approvals on stainless steel - cUL for 3/8" and 1/2" only (4" I.P. Max.)

Maximum recommended set screw torque values per
MSS SP-69.
Set Screw Size 3/8"-16
Foot-Lbs 5
Nm 7

(CARE SHOULD BE TAKEN NOT TO OVER TIGHTEN SET SCREW)

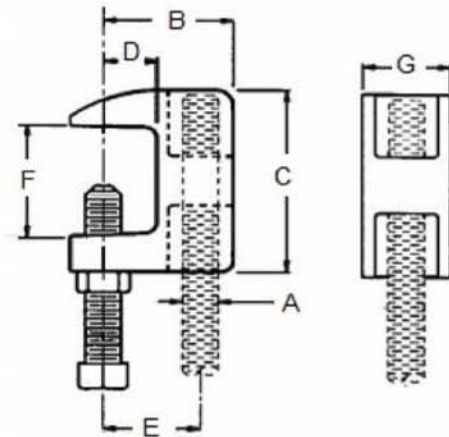
ROD SIZE	SPECIFICATION DATA						MAX. PIPE SIZE	RECOM. MAX. LOAD (LBS)	APPR'X WT. PER 100 (LBS)	PC'S PER PKG.
	A	B	C	D	E	F				
3/8	1 1/4	1 1/2	1/2	7/8	3/4	7/8	4	610	32	100
1/2	1 5/16	1 1/2	1/2	1	3/4	7/8	4	750	32	100
5/8	1 3/4	1 3/4	5/8	1 3/8	3/4	1 1/8	5	750	58	50
3/4	1 7/8	1 7/8	5/8	1 3/8	3/4	1 3/8	6	750	82	50
7/8	2 3/8	1 7/8	5/8	1 3/8	3/4	1 3/8	8	750	80	50



National Fire Equipment Ltd.

WIDE MOUTH TOP BEAM CLAMP #407

- 3/8" through 3/4"
- Malleable Iron* c/w hardened steel cup point set screw
- Bare Metal
- U.L. - U.L.C. listed 3/8 and 1/2 (1/2 for 4" IPS max).
FM approved for 3/8" only.
- Complies with Manufacturers' Standardization Society
MSS SP-58 and SP-69 (Type 19)
- Recommended for use under roof installations with
bar joist type construction, or for attachment to top
flange of structural shapes.
- Specify rod size, figure number, name and finish.
- Also available in Electro-Plated Zinc



Maximum recommended set screw torque values per
MSS SP-69.

Set Screw Size 3/8"-16
Foot-Lbs 5
Nm 7

(CARE SHOULD BE TAKEN NOT TO OVER TIGHTEN SET SCREW)

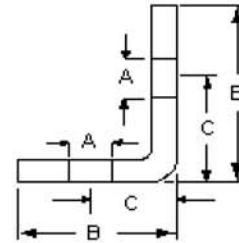
ROD SIZE	SPECIFICATION DATA						MAX. PIPE SIZE	RECOM. MAX. LOAD (LBS)	APPR'X WT. PER 100 (LBS)	PC'S PER PKG.
	A	B	C	D	E	F				
3/8	1 3/8	2	1/2	1	1 1/4	7/8	4	610	40	100
1/2	1 3/8	2	1/2	1	1 1/4	7/8	4	750	39	100
5/8	1 7/8	2 3/8	5/8	1 3/8	1 1/4	1 1/4	5	750	66	50
3/4	1 7/8	2 3/8	5/8	1 3/8	1 1/4	1 1/4	6	750	83	50



National Fire Equipment Ltd.

SIDE BEAM BRACKET #120

- 3/8" through 3/4" rod size
- Carbon Steel
- Bare Metal
- Complies with MSS SP-58 and SP-69 (Type 34).
- Designed to be fastened to side of joist in order to support a hanger rod.
- Specify rod size, figure number, name and finish
- Also available in Electro-Plated Zinc, Stainless Steel, and Hot Dipped Galvanized



SIZE	SPECIFICATION DATA			MATERIAL	RECOM. MAX. LOAD (LBS)	APP'X WT. PER 100 (LBS)	PC'S PER PKG.
	Hole Size A	B	C				
3/8	7/16	2 1/16	1 5/16	3/16 x 1 1/2	300	23	100
1/2	9/16	2 1/8	1 3/8	1/4 x 1 1/2	560	33	100
5/8	11/16	2 3/4	1 5/8	3/8 x 2 1/2	900	113	50
3/4	13/16	3 1/4	2 3/16	3/8 x 2 1/2	900	139	50