



National Fire Equipment Ltd.

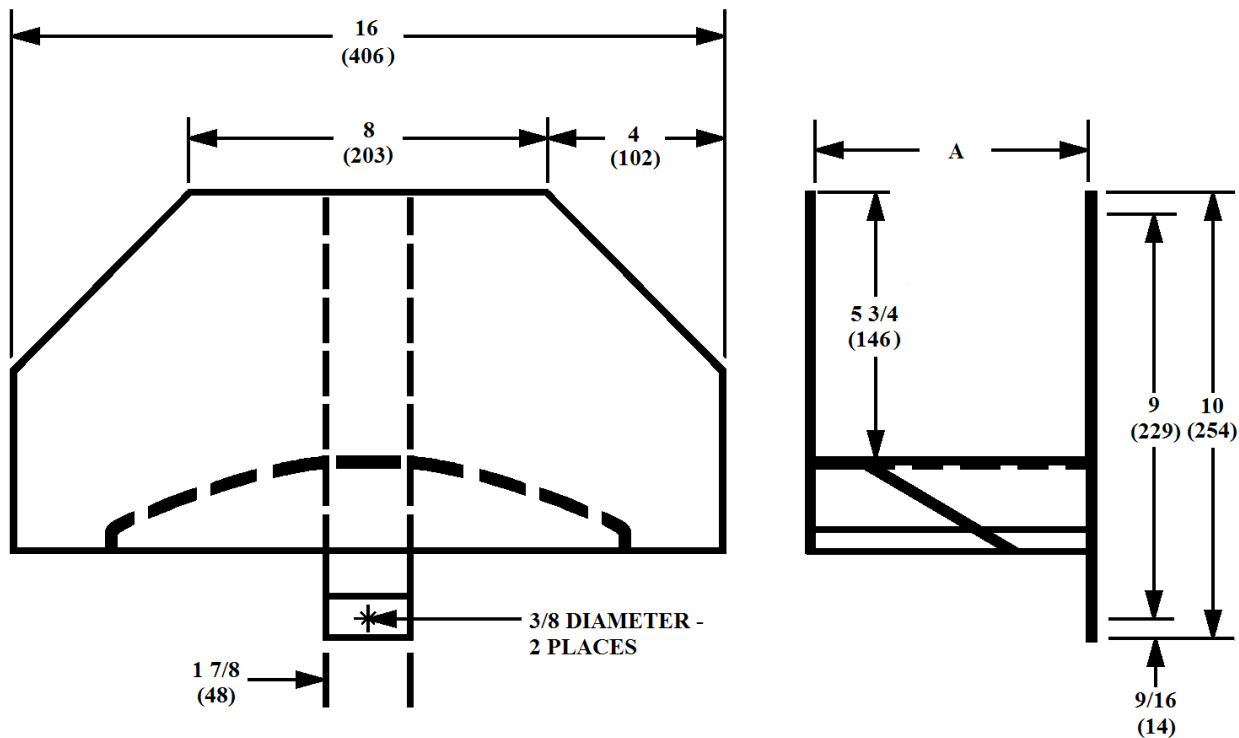
## SADDLE TYPE HOSE RACK

### STANDARD CONSTRUCTION FEATURES:

- 12 Gauge Steel Construction
- Baked Red Enamel Finish
- Holds "Flaked" folded hose.
- Suitable for industrial application for heavier cotton or synthetic industrial or municipal fire hoses.



Model	Description	Weight (lbs.)
3010	Rack, Saddle Hose, 3 1/2" (A) Depth 50' of 1 1/2" cotton rubber-line hose	5
3020	Rack, Saddle Hose, 4 1/2" (A) Depth 50' of 2 1/2" cotton rubber-line hose	6
3030	Rack, Saddle Hose, 6 1/4" (A) Depth 100' of 1 1/2" cotton rubber-line hose	7
3040	Rack, Saddle Hose, 9" (A) Depth 100' of 2 1/2" cotton rubber-line hose	8



MADE IN CANADA

1-800-267-8508 • www.nationalfire.com  
 Moncton • Ottawa • Toronto • Windsor • Regina • Edmonton • Calgary • Vancouver

