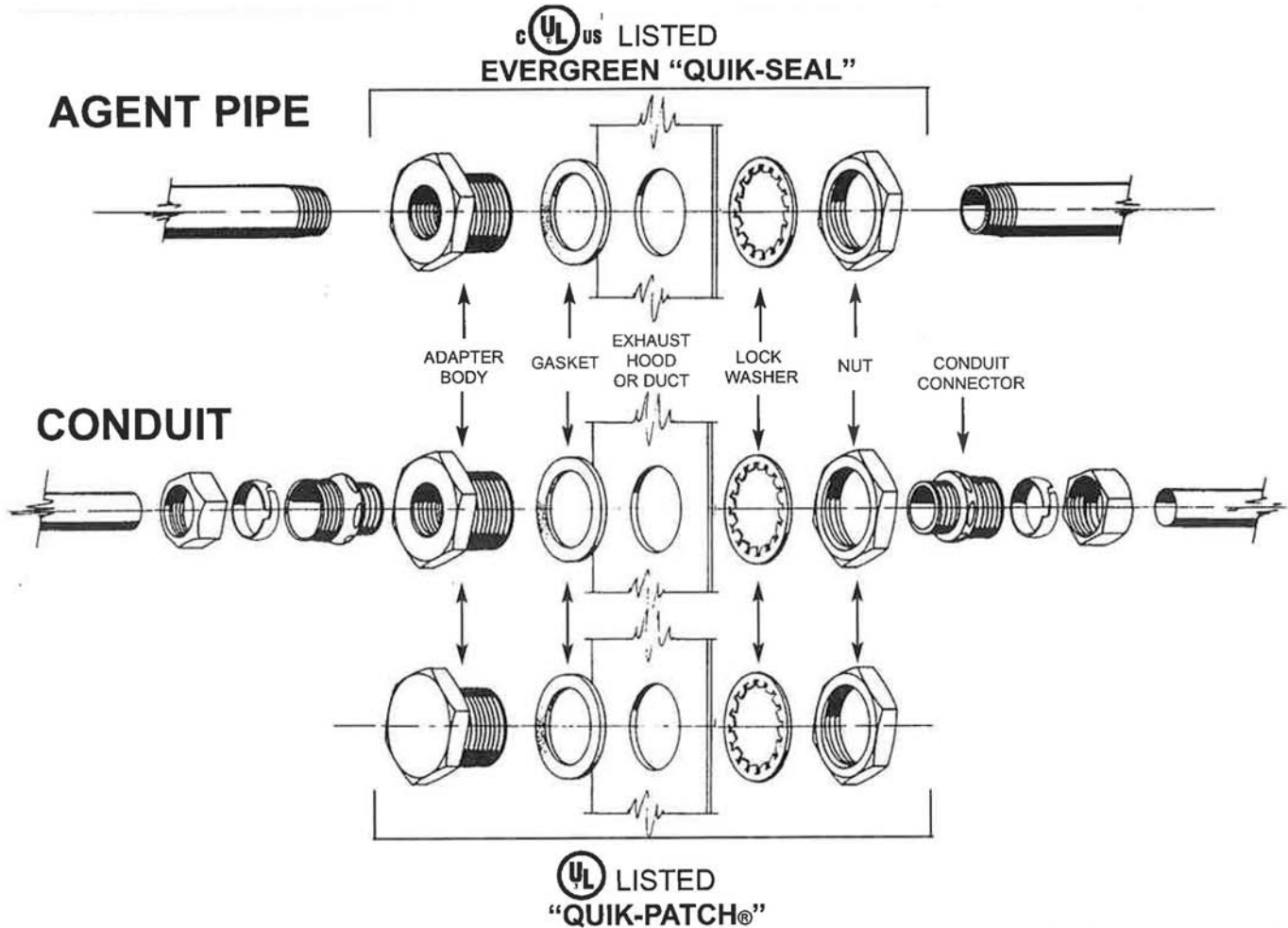




# National Fire Equipment Ltd.

## Evergreen Quik-Seal Adapters and "Quik-Patch"



P/N	FITTING SIZE	HOLE SIZE
218	1/4" Pipe	3/4"
170	3/8" Pipe (Style "A")	1 1/8"
899	3/8" Pipe (Style "B")	7/8"
171	1/2" Pipe	1 1/8"
172	3/4" Pipe	1 3/8"
213	1" Pipe	1 5/8"

"QUIK-PATCH®"	
P/N	HOLE SIZE
285	3/4" to 7/8"
916	7/8" to 1"
205	1 1/8" to 1 5/16"
689	1 3/8" to 1 9/16"
694	1 5/8" to 1 7/8"

To install the 'EVERGREEN QUIK-SEAL' ADAPTER and the "QUIK-PATCH®", proceed in the following manner.

1. Drill, punch, or saw hole in the sheet metal surface according to the chart below.
2. Install one high temperature gasket on the fitting body.
3. Insert fitting through the drilled hole.
4. Install lock washer and nut. Hand tighten, then wrench tighten 1/2 turn (to approximately 50 ft. lbs.). For the 1/4" fitting, hand tighten, then wrench tighten 1/4 to 1/2 turn (to approximately 25 ft. lbs.).
5. Install agent pipe into "EVERGREEN QUIK-SEAL" ADAPTER.
6. When using EMT conduit, install steel conduit adapters in each end of the fitting and wrench tighten. Install conduit to the conduit connector in the normal manner.

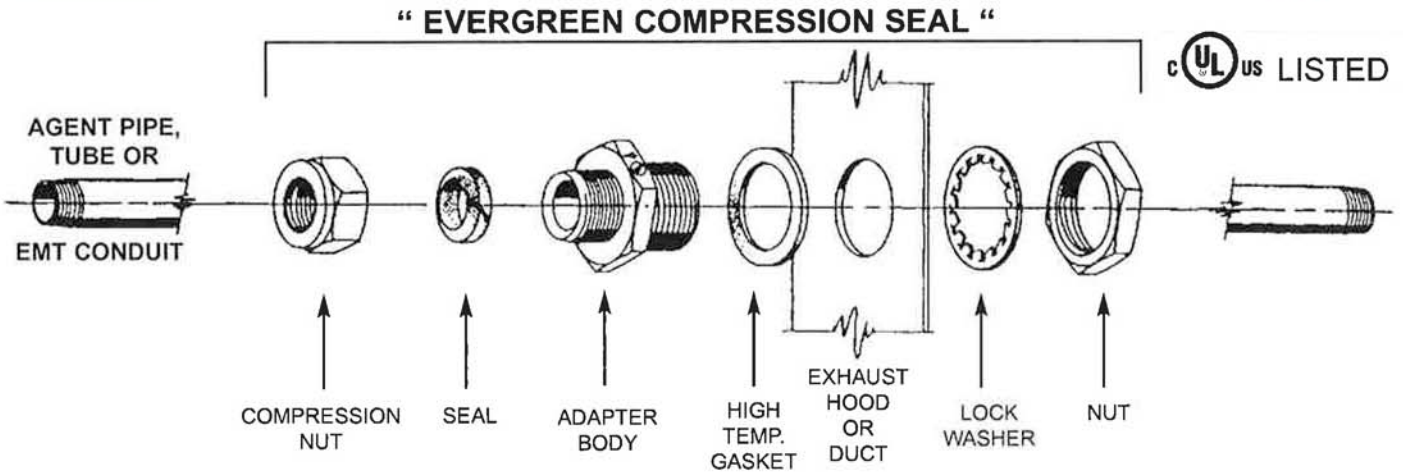
1-800-267-8508 • [www.nationalfire.com](http://www.nationalfire.com)

Moncton • Ottawa • Toronto • Windsor • Regina • Edmonton • Calgary • Vancouver



# National Fire Equipment Ltd.

## EVERGREEN Compression Seal



To install the "Evergreen Compression Seal", proceed in the following manner:

1. Drill, punch, or saw hole in the sheet metal surface according to the chart below.
2. Install one high-temperature gasket on the adapter body.
3. Insert adapter body through the drilled hole.
4. Install lockwasher and nut, hand-tighten. Then wrench-tighten according to chart below while holding on hex of the adapter body.
5. Loosen the compression nut approximately two turns on the adapter body. Run the agent pipe, tube or EMT conduit through the "Evergreen Compression Seal" and make the necessary connections at both ends of agent line.
6. Making certain the seal is in place, hand-tighten the compression nut. Then wrench-tighten according to chart below while holding on hex of the adapter body.

P/N	Sheet Metal Hole		Torque Specifications	
	Fitting Size	Hole Size	Gasket Nut	Compression Nut
881	1/4" Tube	3/4"	25-30 ft. lbs.	7 ft. lbs.
300	3/8" Tube	3/4"	25-30 ft. lbs.	20-25 ft. lbs.
301	1/2" Tube or 1/4" Pipe	3/4"	25-30 ft. lbs.	20-25 ft. lbs.
302	5/8" Tube or 3/8 Pipe	1 1/8"	45-50 ft. lbs.	25-30 ft. lbs.
303	1/2" EMT Con- duit	1 1/8"	45-50 ft. lbs.	25-30 ft. lbs.
304	1/2" Pipe	1 1/8"	45-50 ft. lbs.	45-50 ft. lbs.
305	3/4" Pipe	1 3/8"	45-50 ft. lbs.	45-50 ft. lbs.
306	1" Pipe	1 5/8"	45-50 ft. lbs.	45-50 ft. lbs.

1-800-267-8508 • [www.nationalfire.com](http://www.nationalfire.com)

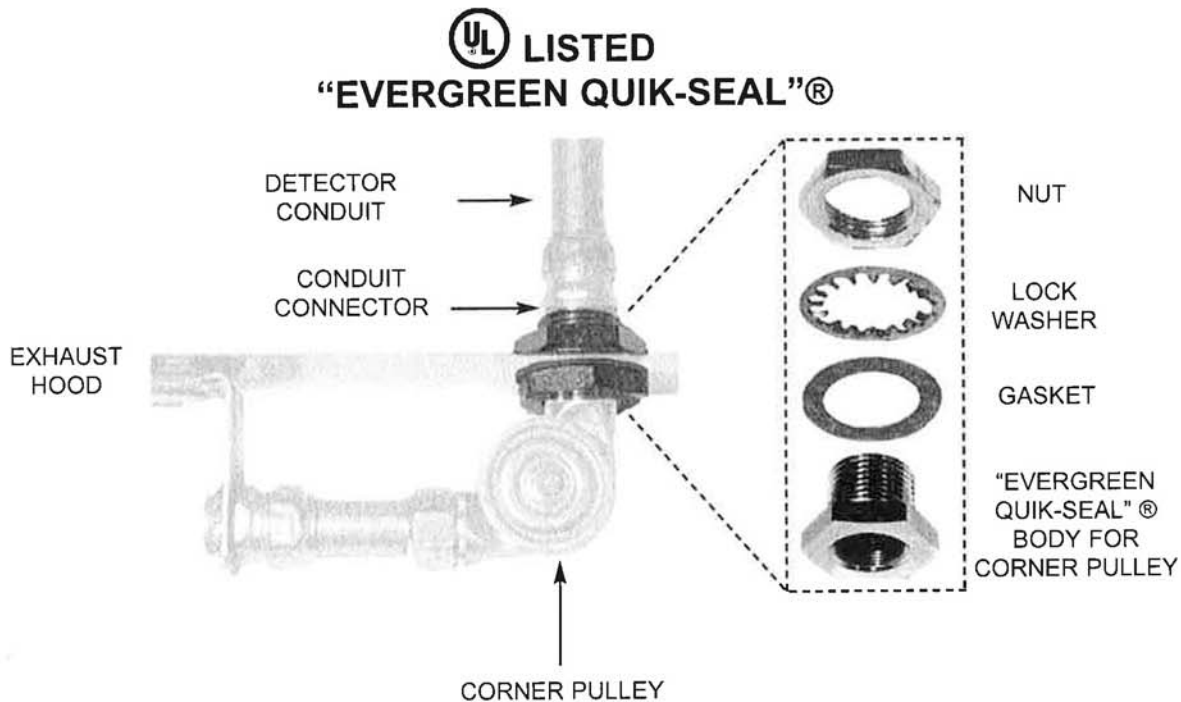
Moncton • Ottawa • Toronto • Windsor • Regina • Edmonton • Calgary • Vancouver



# National Fire Equipment Ltd.



## EVERGREEN QUIK-SEAL FOR CORNER PULLEY



1. Drill, punch, or saw a 1 1/8" hole in the sheet metal hood.
2. Install one high temperature gasket on the fitting body.
3. insert fitting through the drilled hole.
4. Install lock washer and nut. Hand tighten, then wrench tighten 1/2 turn (to approximately 50 ft. lbs.)
5. Install corner pulley to body end of fitting. Install a steel conduit connector into the other end of the "EVERGREEN QUIK-SEAL" and wrench tighten.
6. Install conduit to the conduit connector and wrench tighten in the normal manner.

1-800-267-8508 • [www.nationalfire.com](http://www.nationalfire.com)

Moncton • Ottawa • Toronto • Windsor • Regina • Edmonton • Calgary • Vancouver

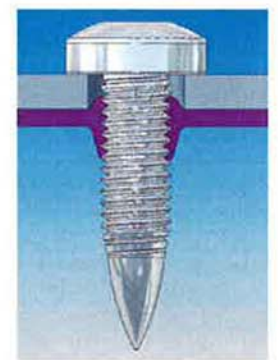


# National Fire Equipment Ltd.



## Technical Specifications Quik-Fastener

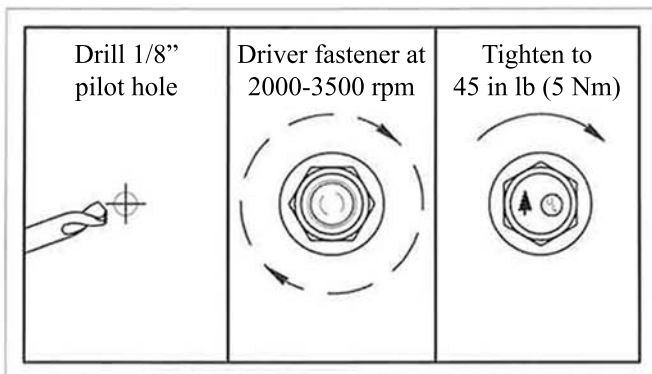
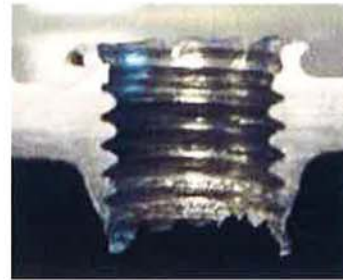
Accessories The NFPA 96 Standard for Ventilation Control and Fire Protection of Commercial Cooking Operations section 5.1.2 requires all penetrations of hood enclosures must be welded or sealed by listed devices. The Standard includes screws, bolts and fasteners. The Evergreen Quik-Fasteners combines the thread producing features of the screw with a high temperature thread jamming coating. The friction from installing the screw activates the thread jammer to assure the grease tight seal. The unique screw design develops thread in the stainless steel sheet for a structurally secure engagement. This product is listed by Underwriters Laboratory. The package includes a double ended 1/8" pilot drill with a 135 degree split point designed for drilling through stainless steel.



Simply pre-drill the holes and use the simple magnetic driver to drive the fastener.

### Benefits:

- Two step installation
- Removable when system design changes
- Patch unwanted holes with the fastener
- Take just seconds to install
- UL listed to meet the requirements of NFPA 96.5.1.2



### Installation Instructions

Part No.	Description
1404	Evergreen Quik-Fastener (pkg of 24) with double ended 1/8" pilot drill
1399	Double ended 1/8" pilot drill
1395	10mm Magnetic Power Driver

1-800-267-8508 • [www.nationalfire.com](http://www.nationalfire.com)

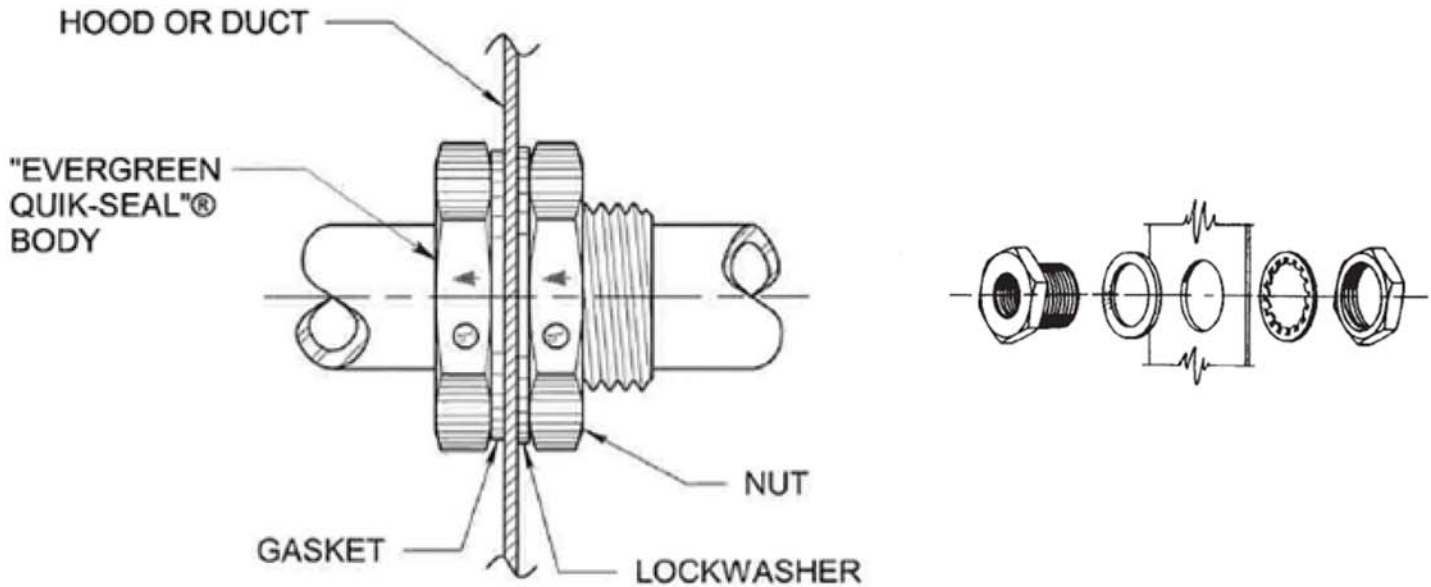
Moncton • Ottawa • Toronto • Windsor • Regina • Edmonton • Calgary • Vancouver



# National Fire Equipment Ltd.



## Evergreen Quick-Seal



Evergreen Quik-Seal	
Size	Part No.
1/4" pipe	218
3/8" pipe	170
3/8" pipe	899
1/2" pipe	171
3/4" pipe	172
1" pipe	213
1 1/4" pipe	265
1 1/2" pipe	268



The Evergreen line of fire suppression accessories offers an inexpensive alternative to welding. The "Evergreen Quik-Seal"® is used with threaded pipe. The "Evergreen Compression Seal" does not require threading which makes installation even faster and easier. The "Evergreen Quik-Patch"® offers a solution to unwanted or previously drilled holes. The fittings are UL listed for the USA and Canada.

1-800-267-8508 • [www.nationalfire.com](http://www.nationalfire.com)

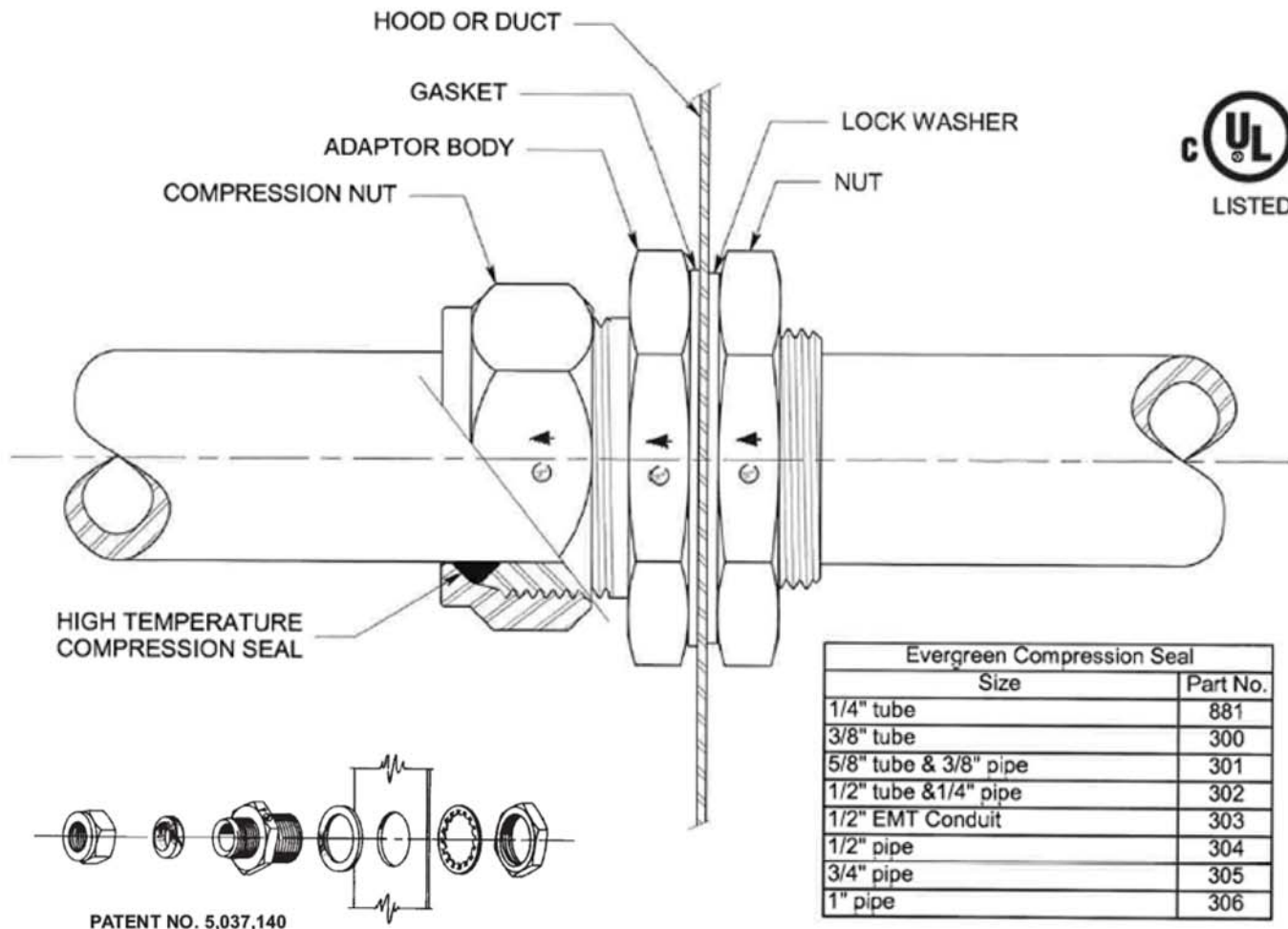
Moncton • Ottawa • Toronto • Windsor • Regina • Edmonton • Calgary • Vancouver



# National Fire Equipment Ltd.



## EVERGREEN COMPRESSION SEAL



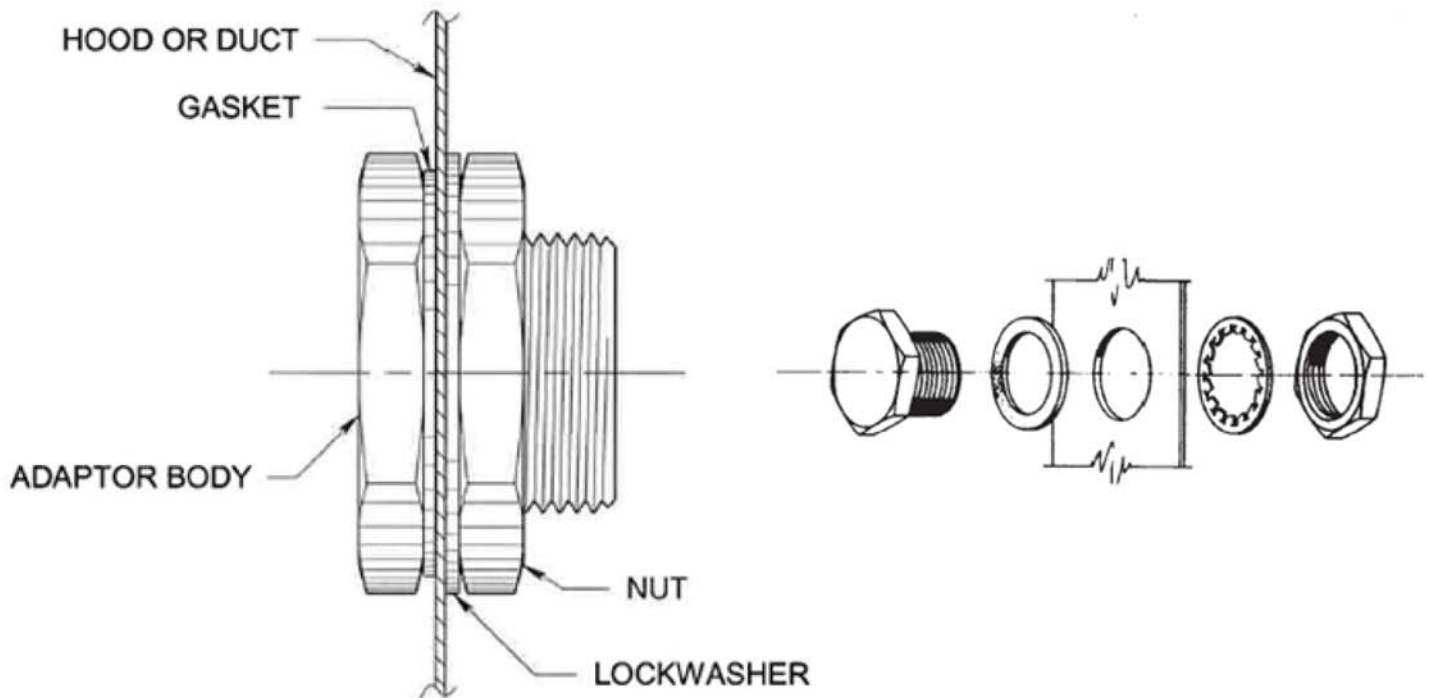
The Evergreen line of fire suppression accessories offers an inexpensive alternative to welding. The "Evergreen Quik-Seal"® is used with threaded pipe. The "Evergreen Compression Seal" does not require threading which makes installation even faster and easier. The "Evergreen Quik-Patch"® offers a solution to unwanted or previously drilled holes. The fittings are UL listed for the USA and Canada.



# National Fire Equipment Ltd.



## Evergreen Quik-Patch



Evergreen Quik Patch	
Size	Part No.
3/4" to 7/8" hole	285
7/8" to 1" hole	916
1 1/8" to 1 5/16" hole	205
1 3/8" to 1 9/16" hole	689
1 5/8" to 1 7/8" hole	694



The Evergreen line of fire suppression accessories offers an inexpensive alternative to welding. The "Evergreen Quik-Seal"® is used with threaded pipe. The "Evergreen Compression Seal" does not require threading which makes installation even faster and easier. The "Evergreen Quik-Patch"® offers a solution to unwanted or previously drilled holes. The fittings are UL listed for the USA and Canada.

1-800-267-8508 • [www.nationalfire.com](http://www.nationalfire.com)

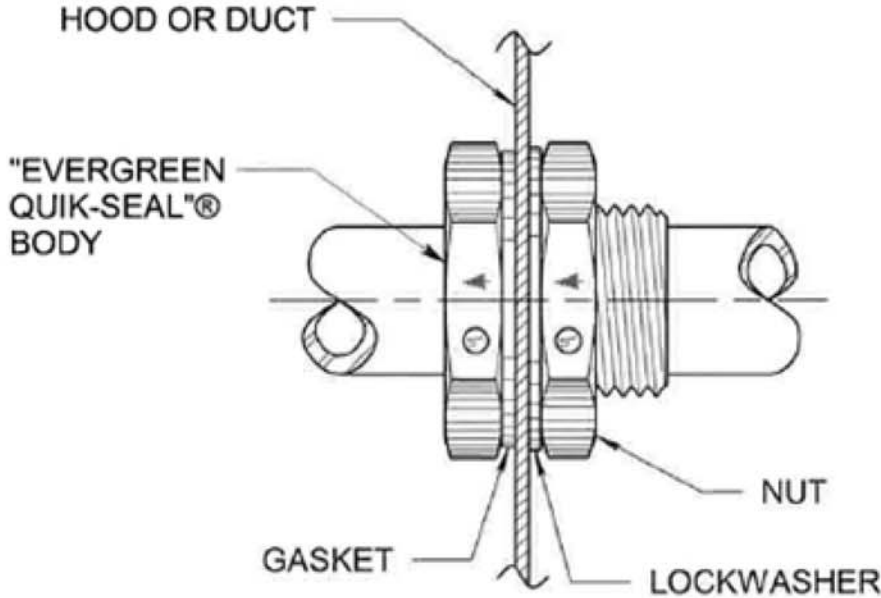
Moncton • Ottawa • Toronto • Windsor • Regina • Edmonton • Calgary • Vancouver



# National Fire Equipment Ltd.



## EVERGREEN Quik-Seal for Corner Pulley



**"EVERGREEN QUIK-SEAL"®  
FOR CORNER PULLEY**

Evergreen Quik-Seal for Corner Pulley	
Size	Part No.
7/8" - 18 UNS x 1/2" NPT Thread	430
5/16" - 20 UNS x 1/2" NPT Thread	682



The Evergreen line of fire suppression accessories offers an inexpensive alternative to welding. The "Evergreen Quik-Seal"® is used with threaded pipe. The "Evergreen Compression Seal" does not require threading which makes installation even faster and easier. The "Evergreen Quik-Patch"® offers a solution to unwanted or previously drilled holes. The fittings are UL listed for the USA and Canada.