



# National Fire Equipment Ltd.

## 1-1/2" STATION MONITOR 350 GPM FP1-125

### SPECIFICATIONS

National Fire/ Fire Pro® station monitors were specifically designed to meet all requirements of municipal and petrochemical applications. The balanced flow single waterway design and precision machining on swivel joints reduces friction loss while improving stream and distance, and ensures ease of operation at all pressure/ flow ranges.

Carbon Steel construction with 304 stainless steel swivels. Standard red polyester powder coating inside and out protect against corrosion.

Type 304 stainless steel ball bearings in joints ensure easy movement and reliable operation.

### REGULARLY FURNISHED

- Zerk fitting for lubrication
- 1-1/2" Waterway
- 360° horizontal and 120° vertical travel
- Low friction loss
- Seamless carbon or stainless steel construction
- 125-350 GPM (473-1325 lpm)

### PRODUCT OPTIONS

- Drainage Provisions
- Gauge and Guard
- Metric Flanges
- Parallel Handle
- Shut Off Valve
- Steering Wheel Handle

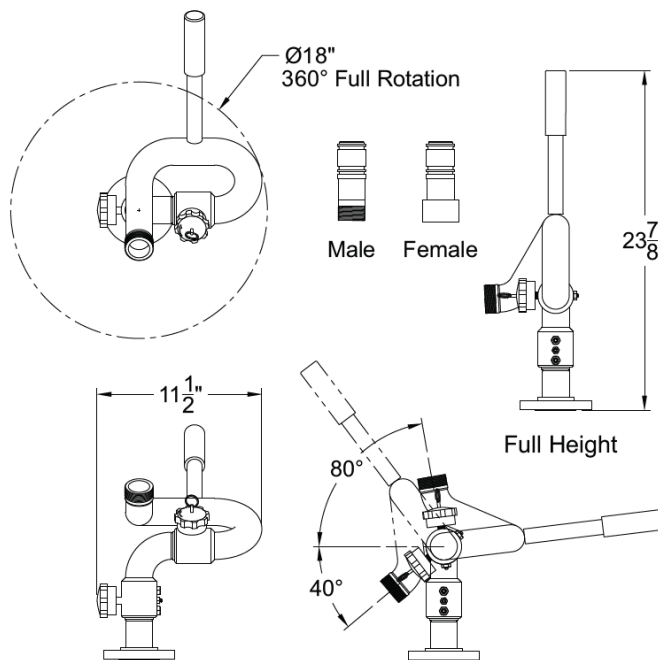
### FINISHES:

Customer Colors \_\_\_\_\_ (Specify)



FP1-125 Shown

Model	Inlet In (mm)	Outlet In (mm)	Weight Lbs (kg)
FP1-125	1-1/2" FLANGE (38)	1-1/2" (38)	20 (9)
FP1(F/M)-125	1-1/2" NPT (38)	1-1/2" (38)	20 (9)



National Fire  
Equipment Ltd.

TORONTO: (905) 761-6355  
Toll Free: (800) 267-8508

OTTAWA: (613) 723-6071

VANCOUVER: (604) 420-1131  
Toll Free: (800)-667-2138

BURNABY: (604)-299-4498

EDMONTON: (780) 455-3870  
Toll Free: (888)-891-1008

CALGARY: (403) 236-5661

MONCTON: (506) 859-7277  
Toll Free: (877) 816-3473

MISSISSAUGA: (905) 565-1385

www.nationalfire.com



# National Fire Equipment Ltd.

## 2-1/2" STATION MONITOR 750 GPM FP-750

### SPECIFICATION

National Fire/ Fire Pro® station monitors were specifically designed to meet all requirements of municipal and petrochemical applications. The balanced flow single waterway design and precision machining on swivel joints reduces friction loss while improving stream and distance, and ensures ease of operation at all pressure/ flow ranges. Carbon Steel construction with 304 stainless steel swivels. Standard red polyester powder coating inside and out protect against corrosion. Type 304 stainless steel ball bearings in joints ensure easy movement and reliable operation.

### REGULARLY FURNISHED

- 360° horizontal and 120° vertical travel
- 2-1/2" Waterway
- Zerk fitting for lubrication
- Low friction loss
- Seamless carbon or stainless steel construction
- 750 GPM (2839 lpm)

### PRODUCT OPTIONS

- o Gauge and Guard
- o Parallel Handle
- o Steering Wheel Handle
- o Drainage Provisions
- o Metric Flanges
- o Shut Off Valve

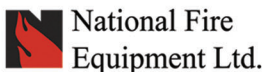
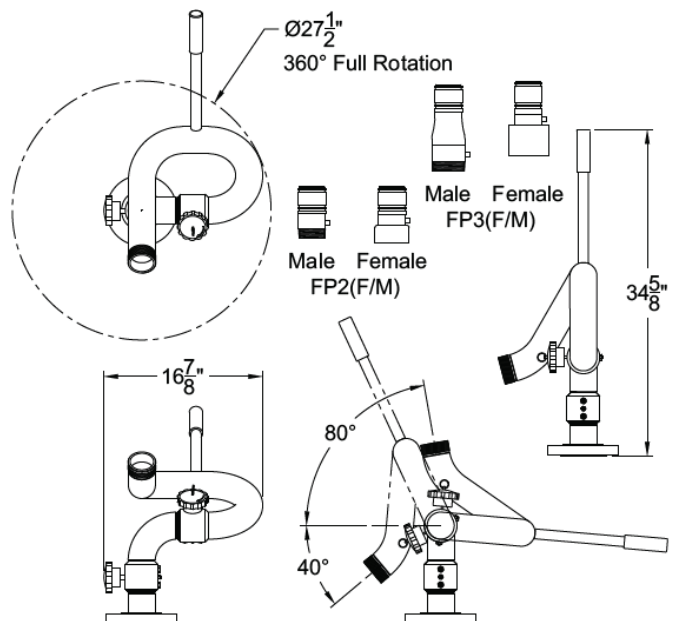
### FINISHES:

- o Customer Colors \_\_\_\_\_ (Specify)



FP2-750 Shown

Model	Inlet In (mm)	Outlet In (mm)	Weight Lbs (kg)
FP2-750	2-1/2" FLANGE (64)	2-1/2" (64)	45 (20)
FP2(F/M)-750	2-1/2" NPT (64)	2-1/2" (64)	45 (20)
FP3-750	3" FLANGE (76)	2-1/2" (64)	52 (24)
FP3(F/M)-750	3" NPT (76)	2-1/2" (64)	52 (24)
FP4-750	4" FLANGE (102)	2-1/2" (64)	52 (24)



TORONTO: (905) 761-6355  
Toll Free: (800) 267-8508  
OTTAWA: (613) 723-6071

VANCOUVER: (604) 420-1131  
Toll Free: (800)-667-2138  
BURNABY: (604)-299-4498

EDMONTON: (780) 455-3870  
Toll Free: (888)-891-1008  
CALGARY: (403) 236-5661

MONCTON: (506) 859-7277  
Toll Free: (877) 816-3473  
MISSISSAUGA: (905) 565-1385

www.nationalfire.com



# National Fire Equipment Ltd.

## 3" STATION MONITOR 1250 GPM FP-1200

### SPECIFICATIONS

National Fire/ Fire Pro® station monitors were specifically designed to meet all requirements of municipal and petrochemical applications. The balanced flow single waterway design and precision machining on swivel joints reduces friction loss while improving stream and distance, and ensures ease of operation at all pressure/ flow ranges. Carbon Steel construction with 304 stainless steel swivels. Standard red polyester powder coating inside and out protect against corrosion.

Type 304 stainless steel ball bearings in joints ensure easy movement and reliable operation.

### REGULARLY FURNISHED

- 3" Waterway to 2-1/2" Outlet
- Seamless carbon or stainless steel construction
- Low friction loss
- Zerk fitting for lubrication
- 360° horizontal and 120° vertical travel
- 1200 GPM (4542 lpm)

### PRODUCT OPTIONS

- Drainage Provisions
- Gauge and Guard
- Metric Flanges
- Parallel Handle
- Shut Off Valve
- Steering Wheel Handle

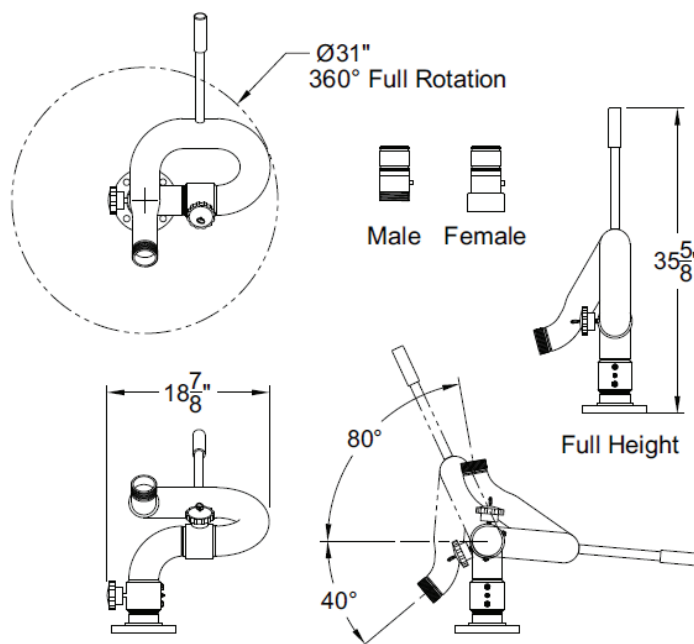
### FINISHES:

Customer Colors \_\_\_\_\_ (Specify)



FP3F-1200 Shown

Model	Inlet In (mm)	Outlet In (mm)	Weight Lbs (kg)
FP3-1200	3" FLANGE (64)	3" (76) Waterway W/ 2-1/2" (64) Male Thread	52 (24)
FP3 (F/M)-1200	3" FLANGE (64)	3" (76) Waterway W/ 2-1/2" (64) Male Thread	52 (24)
FP4-1200	4" FLANGE (76)	3" (76) Waterway W/ 2-1/2" (64) Male Thread	52 (24)



National Fire Equipment Ltd.

TORONTO: (905) 761-6355  
Toll Free: (800) 267-8508

VANCOUVER: (604) 420-1131  
Toll Free: (800)-667-2138

EDMONTON: (780) 455-3870  
Toll Free: (888)-891-1008

MONCTON: (506) 859-7277  
Toll Free: (877) 816-3473

OTTAWA: (613) 723-6071

BURNABY: (604)-299-4498

CALGARY: (403) 236-5661

MISSISSAUGA: (905) 565-1385

www.nationalfire.com



# National Fire Equipment Ltd.

## HYDRANT MOUNT KIT FP3529



**Hydrant Mount** 2-1/2" (64mm) or 3" (76mm) NPT male discharge thread with 2-1/2" (64mm) NH female swivel inlet. "C" clamp hydrant bracket support arms are designed to fit on virtually any hydrant style. Red epoxy finish.



National Fire  
Equipment Ltd.

TORONTO: (905) 761-6355  
Toll Free: (800) 267-8508

OTTAWA: (613) 723-6071

VANCOUVER: (604) 420-1131  
Toll Free: (800)-667-2138

BURNABY: (604)-299-4498

EDMONTON: (780) 455-3870  
Toll Free: (888)-891-1008

CALGARY: (403) 236-5661

MONCTON: (506) 859-7277  
Toll Free: (877) 816-3473

MISSISSAUGA: (905) 565-1385

[www.nationalfire.com](http://www.nationalfire.com)



# National Fire Equipment Ltd.

## MASTER STREAM NOZZLES FP500 & FP2000

### SPECIFICATIONS

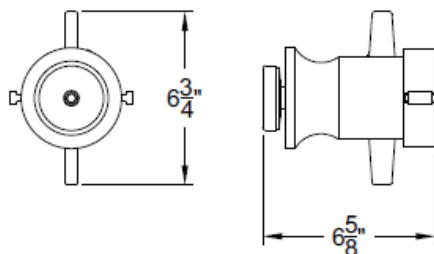
National Fire/ Fire Pro® Master Stream fog/straight stream nozzles are forged from heavy aluminum or brass casting that withstands caustic or salt water environments using deck pipes and station monitors. Precision machining ensures ease of operation when changing patterns at all pressure ranges. Patterns change from a straight stream with maximum effective reach to full 180° fog curtain.

### REGULARLY FURNISHED

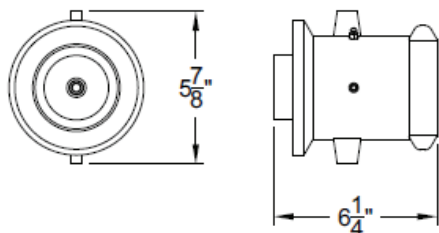
- Combination fog and straight stream
- A = heavy aluminum, B = red brass casting
- Gray hard anodized or cast brass finish
- Delrin seat for shutoff
- Factory preset GPM



FP2000BCG (Shown)

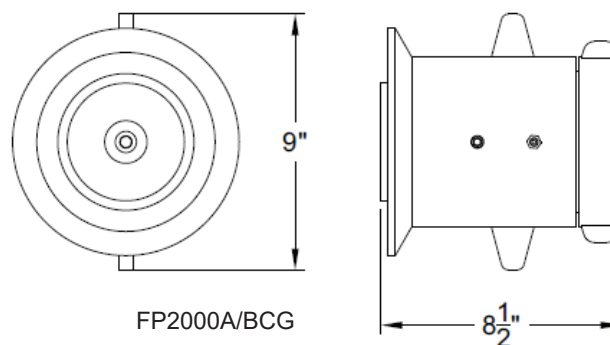


FP500A/B



FP500A/BCG & FP1000A/BCG

Model	Inlet In (mm)	Weight Lbs (kg)	GPD (lpm)
FP500A	2-1/2" (64)	9 (4)	350/500 (1325/1893)
FP500B	2-1/2" (64)	9 (4)	350/*500 (1325/1893)
FP500ACG	2-1/2" (64)	9 (4)	500/750 (1893/2839)
FP500BCG	2-1/2" (64)	9 (4)	*500/750 (1893/2839)
FP1000ACG	2-1/2" (64)	9 (4)	1000/1250 (3785/4732)
FP1000BCG	2-1/2" (64)	9 (4)	1000/1250 (3785/4732)
FP2000ACG	4" (102)	11 (5)	1500/1700/2000/ 2500 (5678/6435/7571/9464)
FP2000BCG	4" (102)	11 (5)	1500/1700/2000/ 2500 (5678/6435/7571/9464)



FP2000A/BCG



National Fire  
Equipment Ltd.

TORONTO: (905) 761-6355  
Toll Free: (800) 267-8508

OTTAWA: (613) 723-6071

VANCOUVER: (604) 420-1131  
Toll Free: (800)-667-2138

BURNABY: (604)-299-4498

EDMONTON: (780) 455-3870  
Toll Free: (888)-891-1008

CALGARY: (403) 236-5661

MONCTON: (506) 859-7277  
Toll Free: (877) 816-3473

MISSISSAUGA: (905) 565-1385

[www.nationalfire.com](http://www.nationalfire.com)