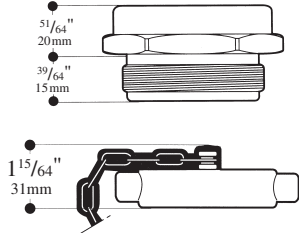




# National Fire Equipment Ltd.

## FIRE DEPARTMENT CONNECTONS OUTLET

### Model 153, 1½" (38mm) Outlet Connection

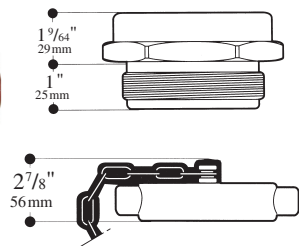


**Application:** Single outlet connection used as a wall hydrant or small pump test connection. Complete with 1½" (38mm) NPT female x 1½" (38mm) male hose thread adapter, brass cap & chain and brass or red aluminum escutcheon plate. Lettering "Wall Hydrant" or "Pump Test"

**Rated Pressure:** 300 PSI /2068.50 kpa

**Options:** Brass and Chrome. Also available with polished finish.

### Model 284, 2½" (65mm) Outlet Connection



**Application:** Single outlet connection used as a wall hydrant or pump test connection. Complete with 2½" (65mm) NPT female x 2½" (65mm) male hose thread adapter, brass cap & chain and brass or red aluminum escutcheon plate. Lettering "Wall Hydrant" or "Pump Test"

**Rated Pressure:** 300 PSI /2068.50 kpa

**Options:** Satin Chrome, Polished Brass, Polished Chrome.

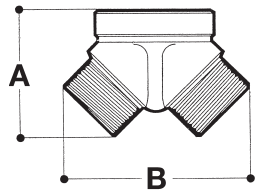
**Model Number 284-G.** As above but with 2½" (65mm) grooved end connection.

### Model 294, 2½" (65mm) Siamese Outlet Connection – Straight (Illustrated)

### Model 296, 2½" (65mm) Siamese Outlet Connection – Angle



Model 294



	inches	mm
	4" x 2½"	101 x 63
<b>A</b>	4 ¾"	121
<b>B</b>	6 ¾"	171

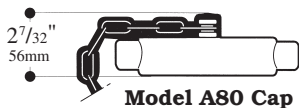
**Application:** Double outlet connection 4" (100mm) female NPT inlet with (2) 2½" (65mm) hose thread outlets, complete with brass caps and round brass or aluminum escutcheon plate. Lettering "Wall Hydrant" or "Pump Test".

**6" Connection:** Use A104 6"x 4" Bushing

**Construction:** Cast Brass Body, Brass or Aluminum escutcheon plate, aluminum break-off caps or brass plugs.

**Rated Pressure:** 300 PSI /2068.50 kpa

**Options:** Satin Chrome, Polished Brass, Polished Chrome.



Model A80 Cap



Model A53G

For Control Valves on 2½" (65mm) Connections  
Use NFE Model A53 or Model A53G

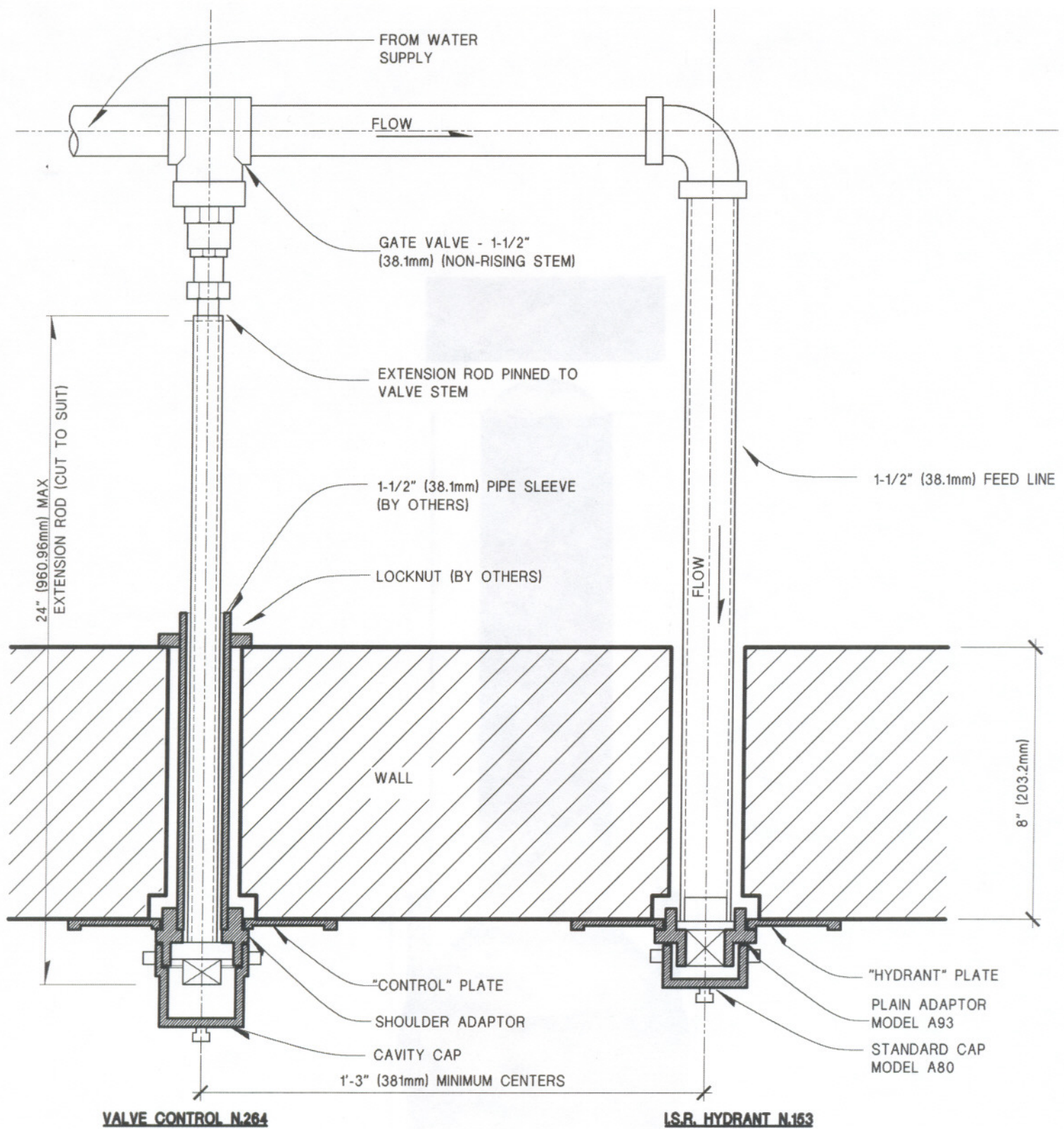
See Page VAL-08 in this catalogue for more information.

### Model Number 294-G & 296-G.

With grooved end pipe main connection.

40 Edilcan Drive, Concord, Ontario L4K 3S6 - Tel: (905) 761-6355 - Fax: (905) 761-6458 - 1-800-267-8508

website: [www.nationalfire.com](http://www.nationalfire.com)



## NATIONAL FIRE EQUIPMENT

40 Audia Court, Concord, Ontario L4K 3N4  
 Tel 905 761 6355  
 Fax 905 761 6458

Drawing Title  
**ICE SKATING RINK HYDRANT  
 (I.S.R.H.)  
 WITH VALVE CONTROL**

Contractor: Project

Scale  
 3" = 1'-0"

Drawn  
 NCB

Project No.

Date  
 08.28.00

Drawing No.

**153**