



# National Fire Equipment Ltd.

## CONTINUOUS FLOW HOSE REEL CABINETS

### CR-1300 & CS-1300 SERIES REEL CABINETS

Designed for swing type continuous flow hose reels and constructed similar to NFE Fire Hose Cabinets. 14 Gauge (2mm) fronts with full-length semi-concealed piano hinge and flush stainless steel door latch. The cabinet door can be removed for either left or right swing. The tubs are constructed of 18 Gauge (1.19mm) metal c/w a reinforcement plate to support hose reels. All edges of the entire cabinet are ground and rounded for safety.

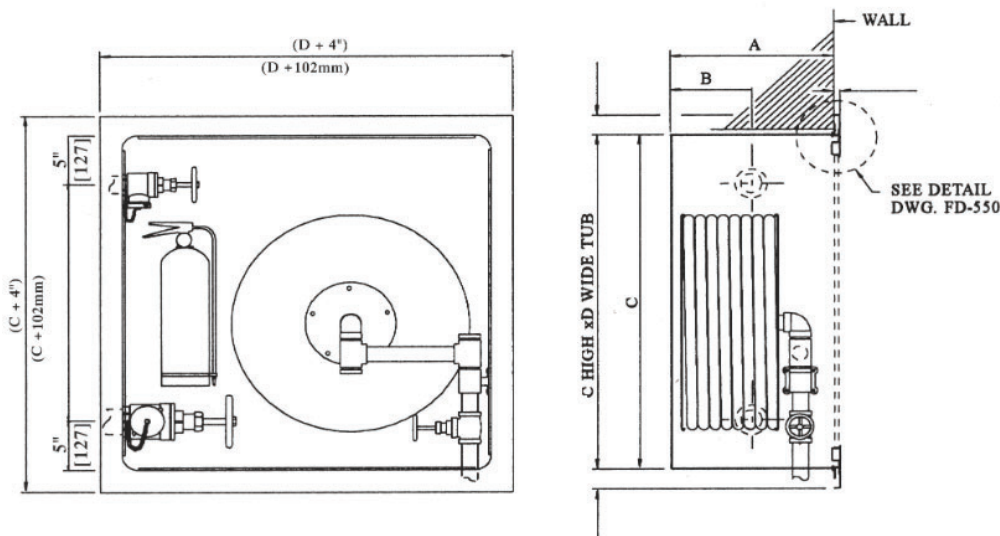
**WARNING:** Standard powder coated cabinets are not designed for outdoor applications. Depending on environment use epoxy coatings, galvanized, stainless steel or fiberglass materials. Contact our customers service representatives for assistance.

#### Specifications:

Recessed cabinets shall be CR \_\_\_\_\_, \_\_\_\_\_"x\_\_\_\_\_"x\_\_\_\_\_" with 18 gauge (1.19mm) white powder coated steel tubs. The cabinet tub shall be reinforced to support the hose reel. 14 Gauge (2mm) white powder coated steel door & frame with hollow channel reinforcement. Front section to have 2" (51mm) adjustment to wall surface and complete with ½" (13mm) turn back frame. Complete with full-length semi-concealed piano hinges, Model SMSS flush stainless steel door catch, and full panel of 3/16" (5mm) Glass. Stainless steel Fronts to have fully concealed "SOSS" hinges.

#### Specifications :

Surface mounted reel cabinets shall be NFE CS- \_\_\_\_\_, \_\_\_\_\_"x\_\_\_\_\_"x\_\_\_\_\_" with 18 gauge (1.19mm) white powder coated steel tubs. The cabinet tub shall be reinforced to support the hose reel. 14 Gauge (2mm) white powder coated steel door & frame with hollow channel reinforcement. The frame section can be site adjusted for left or right door swing. Complete with full-length semi-concealed piano hinges, Model SMSS flush stainless steel door catch, and full panel of 3/16" (5mm) Glass.



Model	MOUNTING TYPE	Dimensions				FIRE EXTINGUISHER MAXIMUM	Valve
		A	B	C	D		
CR-1310	RECESSED	12\" (300mm)	N/A	30\" (762mm)	30\" (762mm)	5LB DRY CHEM	
CS-1310	SURFACE	12\" (300mm)	N/A	30\" (762mm)	30\" (762mm)	5LB DRY CHEM	
CR-1320	RECESSED	12\" (300mm)	N/A	30\" (762mm)	34\" (864mm)	20LB DRY CHEM	
CS-1320	SURFACE	12\" (300mm)	N/A	30\" (762mm)	34\" (864mm)	20LB DRY CHEM	
CR-1330	RECESSED	12\" (300mm)	6\" (150mm)	34\" (864mm)	30\" (762mm)	5LB DRY CHEM	1 VALVE (1.5\"/2.5\")
CS-1330	SURFACE	12\" (300mm)	6\" (150mm)	34\" (864mm)	30\" (762mm)	5LB DRY CHEM	1 VALVE (1.5\"/2.5\")
CR-1340	RECESSED	12\" (300mm)	6\" (150mm)	34\" (864mm)	34\" (864mm)	5LB DRY CHEM	2 VALVES
CS-1340	SURFACE	12\" (300mm)	6\" (150mm)	34\" (864mm)	34\" (864mm)	5LB DRY CHEM	2 VALVES



National Fire  
Equipment Ltd.

TORONTO: (905) 761-6355  
Toll Free: (800) 267-8508

OTTAWA: (613) 723-6071

VANCOUVER: (604) 420-1131  
Toll Free: (800)-667-2138

BURNABY: (604)-299-4498

EDMONTON: (780) 455-3870  
Toll Free: (888)-891-1008

CALGARY: (403) 236-5661

MONCTON: (506) 859-7277  
Toll Free: (877) 816-3473

MISSISSAUGA: (905) 565-1385

[www.nationalfire.com](http://www.nationalfire.com)