



National Fire Equipment Ltd.

CONTINUOUS FLOW HOSE REEL CABINETS

CR-1300 & CS-1300 SERIES REEL CABINETS

Designed for swing type continuous flow hose reels and constructed similar to NFE Fire Hose Cabinets. 14 Gauge (2mm) fronts with full-length semi-concealed piano hinge and flush stainless steel door latch. The cabinet door can be removed for either left or right swing. The tubs are constructed of 18 Gauge (1.19mm) metal c/w a reinforcement plate to support hose reels. All edges of the entire cabinet are ground and rounded for safety.

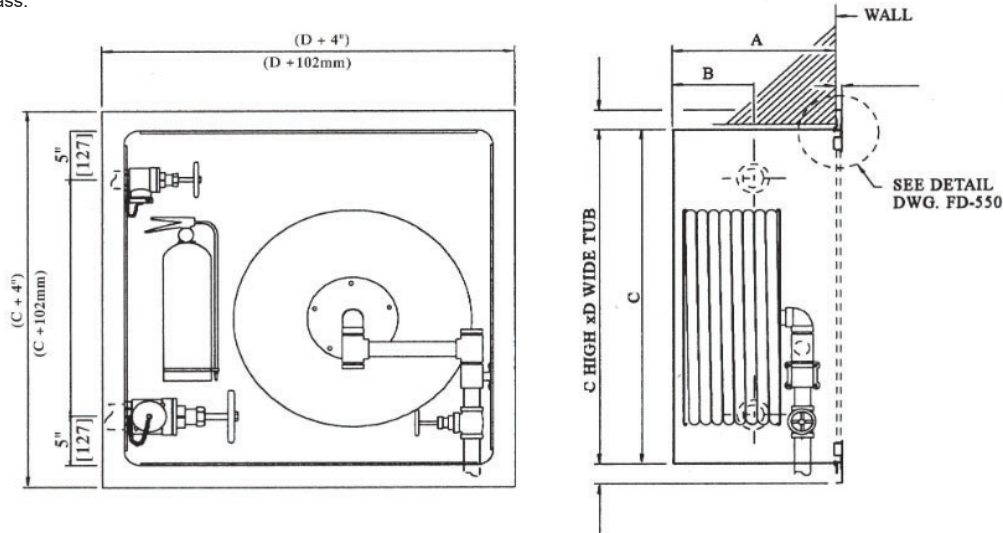
WARNING: Standard baked enamel cabinets are not designed for outdoor applications. Depending on environment use epoxy coatings, galvanized, stainless steel or fiberglass materials. Contact our customers service representatives for assistance.

Specifications:

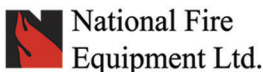
Recessed cabinets shall be CR _____, _____"x_____"x_____" with 18 gauge (1.19mm) baked white enamel corrosion protected steel tubs. The cabinet tub shall be reinforced to support the hose reel. 14 Gauge (2mm) grey baked enamel corrosion protected steel door & frame with hollow channel reinforcement. Front section to have 2" (51mm) adjustment to wall surface and complete with 1/2" (13mm) turn back frame. Complete with full-length semi-concealed piano hinges, Model SMSS flush stainless steel door catch, and full panel of 3/16" (5mm) Glass. Stainless steel Fronts to have fully concealed "Soss" hinges.

Specifications:

Surface mounted reel cabinets shall be NFE CS- _____, _____"x_____"x_____" with 18 gauge (1.19mm) baked grey enamel corrosion protected steel tubs. The cabinet tub shall be reinforced to support the hose reel. 14 Gauge (2mm) grey baked enamel corrosion protected steel door & frame with hollow channel reinforcement. The frame section can be site adjusted for left or right door swing. Complete with full-length semi-concealed piano hinges, Model SMSS flush stainless steel door catch, and full panel of 3/16" (5mm) Glass.



Model	MOUNTING TYPE	Dimensions				FIRE EXTINGUISHER MAXIMUM	Valve
		A	B	C	D		
CR-1310	RECESSED	12" (300mm)	N/A	30" (762mm)	30" (762mm)	5LB DRY CHEM	
CS-1310	SURFACE	12" (300mm)	N/A	30" (762mm)	30" (762mm)	5LB DRY CHEM	
CR-1320	RECESSED	12" (300mm)	N/A	30" (762mm)	34" (864mm)	20LB DRY CHEM	
CS-1320	SURFACE	12" (300mm)	N/A	30" (762mm)	34" (864mm)	20LB DRY CHEM	
CR-1330	RECESSED	12" (300mm)	6" (150mm)	34" (864mm)	30" (762mm)	5LB DRY CHEM	1 VALVE (1.5"/2.5")
CS-1330	SURFACE	12" (300mm)	6" (150mm)	34" (864mm)	30" (762mm)	5LB DRY CHEM	1 VALVE (1.5"/2.5")
CR-1340	RECESSED	12" (300mm)	6" (150mm)	34" (864mm)	34" (864mm)	5LB DRY CHEM	2 VALVES
CS-1340	SURFACE	12" (300mm)	6" (150mm)	34" (864mm)	34" (864mm)	5LB DRY CHEM	2 VALVES



TORONTO: (905) 761-6355
Toll Free: (800) 267-8508

VANCOUVER: (604) 420-1131
Toll Free: (800)-667-2138

EDMONTON: (780) 455-3870
Toll Free: (888)-891-1008

MONCTON: (506) 859-7277
Toll Free: (877) 816-3473

OTTAWA: (613) 723-6071

BURNABY: (604)-299-4498

CALGARY: (403) 236-5661

MISSISSAUGA: (905) 565-1385

www.nationalfire.com