



NATIONAL FIRE EQUIPMENT LTD.
SERVICE, SOLUTIONS, INNOVATION

CPVC TWO-HOLE PIPE STRAP

NFE CPVC Two-Hole Side Mount Strap is designed to support CPVC pipe horizontally from the side or bottom of beam. When installed on the structural ceiling, it serves as a restraint to prevent the thrust generated when the sprinkler head activates.

To be installed with supplied screws.

Carbon steel galvanized sheet finish.

Available in 3/4" to 2" in sizes.

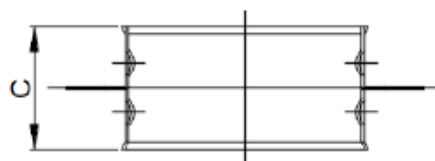
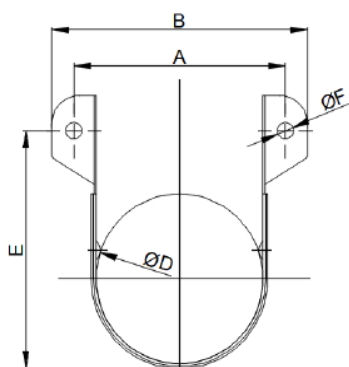
UL/CUL Listed: Certification No: UL-US-2323969-1



Part #:

Description

| | |
|---------|--------------------------------------|
| SMTH075 | B-STRAP SIDE MOUNT 2 HOLE NFE 3/4" |
| SMTH100 | B-STRAP SIDE MOUNT 2 HOLE NFE 1" |
| SMTH125 | B-STRAP SIDE MOUNT 2 HOLE NFE 1 1/4" |
| SMTH150 | B-STRAP SIDE MOUNT 2 HOLE NFE 1 1/2" |
| SMTH200 | B-STRAP SIDE MOUNT 2 HOLE NFE 2" |



| Size | D | A | B | C | E | F |
|--------|------|------|------|----|------|-----|
| Inch | mm | mm | mm | mm | mm | mm |
| 3/4" | 26.7 | 43 | 58.5 | 30 | 49 | 5.8 |
| 1" | 33.4 | 49.5 | 65 | 30 | 56.5 | 5.8 |
| 1-1/4" | 42.2 | 58.5 | 74 | 30 | 65 | 5.8 |
| 1-1/2" | 48.3 | 64.5 | 80 | 30 | 71 | 5.8 |
| 2" | 60.3 | 76.5 | 92 | 30 | 83.5 | 5.8 |