



NATIONAL FIRE EQUIPMENT LTD.

SERVICE, SOLUTIONS, INNOVATION

CPVC TWO-HOLE PIPE STRAP

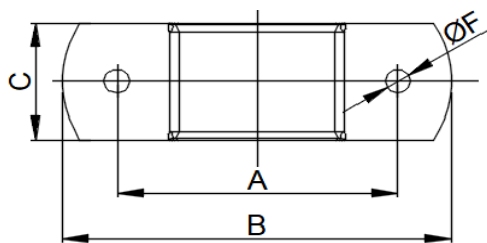
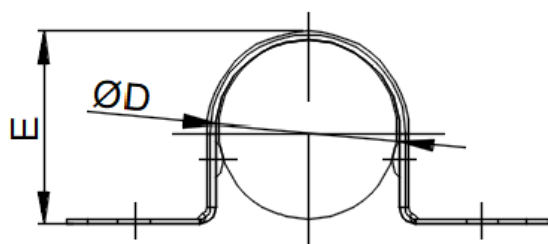
NFE CPVC Two-Hole pipe strap when installed on the structural ceiling, it serves as a restraint to prevent the thrust generated when the sprinkler head activates. Used for guiding on beam tops or vertical pipes. To be installed with supplied screws.

Carbon steel galvanized sheet finish.

Available in 1" to 2" in sizes.

UL/CUL Listed: Certification No: UL-US-2323969-1

Part No:	Description
TH100	B-STRAP TWO HOLE NFE 1"
TH125	B-STRAP TWO HOLE NFE 1 1/4"
TH150	B-STRAP TWO HOLE NFE 1 1/2"
TH200	B-STRAP TWO HOLE NFE 2"



Size	D	A	B	C	E	F
Inch	mm	mm	mm	mm	mm	mm
1"	33.4	65	90	30	33.4	5.8
1-1/4"	42.2	80	105	30	42.2	5.8
1-1/2"	48.3	87	112	30	48.3	5.8
2"	60.3	100	125	30	60.3	5.8