



## RELY FX™ 10lb ABC Fire Extinguisher Spec Sheet

The RELY FX™ 10-pound ABC fire extinguisher is specifically designed for use in addressing a wide range of industrial, marine, mining and conditions where challenging fires are possible. The ratings provide compliance with NFPA 10 Light and Ordinary Occupancy hazard requirements. This model satisfies UL, ULC, USCG, DOT, and NFPA requirements.



RELY FX Model P10A	
Part Number:	ABC-100RF
Numerical Fire Rating:	2-A:80-B:C
Agent Charge Capacity:	13.2 lb (6 kg) ABC dry chemical
Operating Pressure:	240 psi (1655 kPa)
Agent Discharge Rate:	0.62 lb/s (0.28 kg/s)
Effective Discharge Duration:	22 seconds
Effective Discharge Range:	27 feet (8.2m)
Operating Temperature:	-65 to 120°F* (-54 to 49°C)
Total Charged Weight:	28.8 lb (13.1 kg)
Total Height:	19.25 in (48.9 cm)
Total Depth:	7.0 in (17.8 cm)
Total Width:	8.0 in (20.3 cm)
UL Listed and Labeled:	UL 299 and UL 711 standards
ULC Listed and Labeled:	S-504 and S-508 standards
Approval Agency File:	EX28741
USCG References:	46 CFR § 162.028 Type-A Size II / Type-B:C Size II
DOT:	Meets 49 CFR requirements
Heavy Duty Bracket:	Black Steel 81-739

The new RELY FX™ P10A ABC dry chemical fire extinguisher effectively addresses the extinguishment of Class “A”, “B”, and “C” types of fires by novice and professional operators. Ideally suited for deployment in demanding environments including emergency response, military combat situations, and corrosive marine environments. This non-shat DOT 3AL-1800 aluminum cylinder successfully met rigorous operational vibration and shock tests to ensure structural and operational integrity under severe conditions.

The RELY FX™ P10A ABC dry chemical model carries a ten (10) year limited factory warranty.

\*Manufacturer-tested for operational performance across temperature extremes ranging from -65°F (-54°C) to 160°F (71°C), providing a total functional temperature span of 225°F. Refer to **RELY FX Bulletin PB103** for more information.

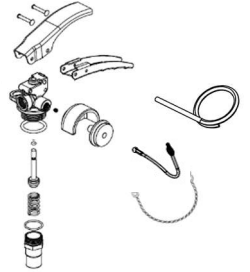
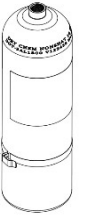
*All information listed herein is subject to change.*

PS25103-A

## RELY FX™ 10lb ABC Fire Extinguisher Hardware Features

**Extinguishing Agent:** Extinguisher contains 13.2 pounds (6 kg) of RELY ABC 90 multi-purpose dry chemical extinguishing agent that is 90% monoammonium phosphate (MAP). In addition, the unit is engineered to reliably perform in elevated temperature exposures up to 160°F (71°C)  
*[see nameplate or RELY FX Product Bulletin PB103 for additional details]*

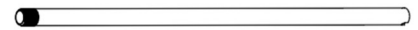
**Agent Cylinder:** Non-shat and non-magnetic DOT 3AL-1800 aluminum specification cylinder with indexed internal threaded collar eliminates installation orientation issues. External surface is finished with a red epoxy powder coating for added corrosion resistance and approval requirements. Cylinders meet 240-hour corrosion resistance exposure tests for offshore marine and USCG shipboard approval. Cylinders carry a ten (10) year DOT retest/requalification interval and do not require the six (6) year internal examinations.  
*[see RELY FX Product Bulletin PB102 for additional details]*



**Valve Assembly:** Heavy-duty chrome-plated forged brass valve assemblies feature heavy-duty protective gauge guards and an integrated hanger loop with stainless-steel hardware - operating lever, carry handle, rivets, and valve stem shafts.

**Pull Pin and Retainer:** Extra thick .175-inch (.44 cm) 316 stainless steel pull pin shaft with a large 1.52-inch (3.9 cm) inside diameter finger pull loop. Black retention tether (or optional stainless-steel retention chain) prevents loss of pull pin after use.

**Internal Siphon Tube Assembly:** Threaded heavy-duty steel construction.



**Discharge Hose and Nozzle Assembly:** Stainless steel threaded valve hex fitting connection, protective sleeve covered ferrule crimp, extended length 0.5-inch (1.3 cm) inside diameter discharge hose, and black anodized aluminum nozzle.



**Hose Retainer Band:** Heavy-duty 316 stainless steel 0.75-inch (1.9 cm) wide hose band and retainer assembly with threaded adjustment.

**Nameplates:** Large, field replaceable, 6 x 12-inch (15.2 x 30.5 cm) tri-lingual nameplates list extinguisher service information, contents, and illustrated operating instructions.

**Factory Support and Training:** Product service manuals and online factory training courses available to service companies and owners wishing to perform service work on RELY fire extinguisher models in accordance with NFPA-10. Contact NFE customer service for more information at 1-800-267-8508.

PS25103-A