



# National Fire Equipment Ltd.



## MODEL 375XL

Lead-Free\* Reduced Pressure Principle – Backflow Preventers 1-1/4" to 2"

*\*This product contains a weighted average lead content less than 0.25% for wetted surfaces.*

| Item Number | Description             | 1-1/4"           | 1-1/2"           | 2"               |
|-------------|-------------------------|------------------|------------------|------------------|
| 1           | HOUSING                 | 374-1            | 374-1            | 374-1            |
| 2           | INTEGRAL INLET BV       | 374-48AXL        | 375-48AXL        | 376-48AXL        |
| 3           | O-RING                  | 331N             | 331N             | 331N             |
| 4           | SLEEVE                  | 374-2            | 374-2            | 374-2            |
| 5           | O-RING                  | 337N             | 337N             | 337N             |
| 6           | BOLT                    | 352-11           | 352-11           | 352-11           |
| 7           | TEST COCKS              | 14-860XL         | 14-860XL         | 14-860XL         |
| 8           | BOLT                    | 959-11B          | 959-11B          | 959-11B          |
| 9           | INTEGRAL OUTLET BV      | 374-48BXL        | 375-48BXL        | 376-48BXL        |
| 10          | SEAT, #1                | 374-18A          | 374-18A          | 374-18A          |
| 11          | SPRING, #1              | 374-33A          | 374-33A          | 374-33A          |
| 12          | SPRING RETAINER, #1     | 374-80A          | 374-80A          | 374-80A          |
| 13          | BOLT                    | 374-11A          | 374-11A          | 374-11A          |
| 14          | SEAL RETAINER           | 374-14A          | 374-14A          | 374-14A          |
| 15          | SEAL WASHER             | 374-12A          | 374-12A          | 374-12A          |
| 16          | POPPET                  | 374-30           | 374-30           | 374-30           |
| 17          | O-RING                  | 336N             | 336N             | 336N             |
| 18          | SEAT, #2                | 374-18B          | 374-18B          | 374-18B          |
| 19          | SPRING, #2              | 374-33B          | 374-33B          | 374-33B          |
| 20          | SPRING RETAINER, #2     | 374-80B          | 374-80B          | 374-80B          |
| 21          | SEAL WASHER             | 374-12           | 374-12           | 374-12           |
| 22          | SEAL RETAINER           | 374-14CU         | 374-14CU         | 374-14CU         |
| 23          | BOLT                    | 952-11           | 952-11           | 952-11           |
| 24          | O-RING                  | 334N             | 334N             | 334N             |
| 25          | NUT                     | 5752-9           | 5752-9           | 5752-9           |
| 26          | O-RING                  | WK-109N          | WK-109N          | WK-109N          |
| 27          | BODY, RV                | 374-1CU          | 374-1CU          | 374-1CU          |
| 28          | SEAT, RV                | 374-18CU         | 374-18CU         | 374-18CU         |
| 29          | SPRING GUIDE            | 374-80CU         | 374-80CU         | 374-80CU         |
| 30          | SPRING, RV              | 374-33CU         | 374-33CU         | 374-33CU         |
| 31          | DIAPHRAGM               | 374-43           | 374-43           | 374-43           |
| 32          | PLUNGER, RV             | 374-34           | 374-34           | 374-34           |
| 33          | O-RING                  | 123N             | 123N             | 123N             |
| 34          | O-RING                  | 243N             | 243N             | 243N             |
| 35          | COVER                   | 374-3            | 374-3            | 374-3            |
| 36          | BOLT                    | 374-11           | 374-11           | 374-11           |
| 37          | SPACER                  | 374-2A           | 374-2A           | –                |
| 38          | #1 CHECK ASSY           | 374-300A         | 374-300A         | 374-300A         |
| 39          | #2 CHECK ASSY           | 374-300B         | 374-300B         | 374-300B         |
| 40          | RELIEF VALVE STEM ASSY  | 374-50           | 374-50           | 374-50           |
| 41          | VESSEL W/CHECKS & RV    | RK114-375V       | RK114-375V       | RK114-375V       |
| 42          | HOUSING, BLOW OUT/FLUSH | RK114-350-375BOF | RK114-350-375BOF | RK114-350-375BOF |



National Fire  
Equipment Ltd.

TORONTO: (905) 761-6355  
Toll Free: (800) 267-8508

OTTAWA: (613) 723-6071

VANCOUVER: (604) 420-1131  
Toll Free: (800)-667-2138

BURNABY: (604)-299-4498

EDMONTON: (780) 455-3870  
Toll Free: (888)-891-1008

CALGARY: (403) 236-5661

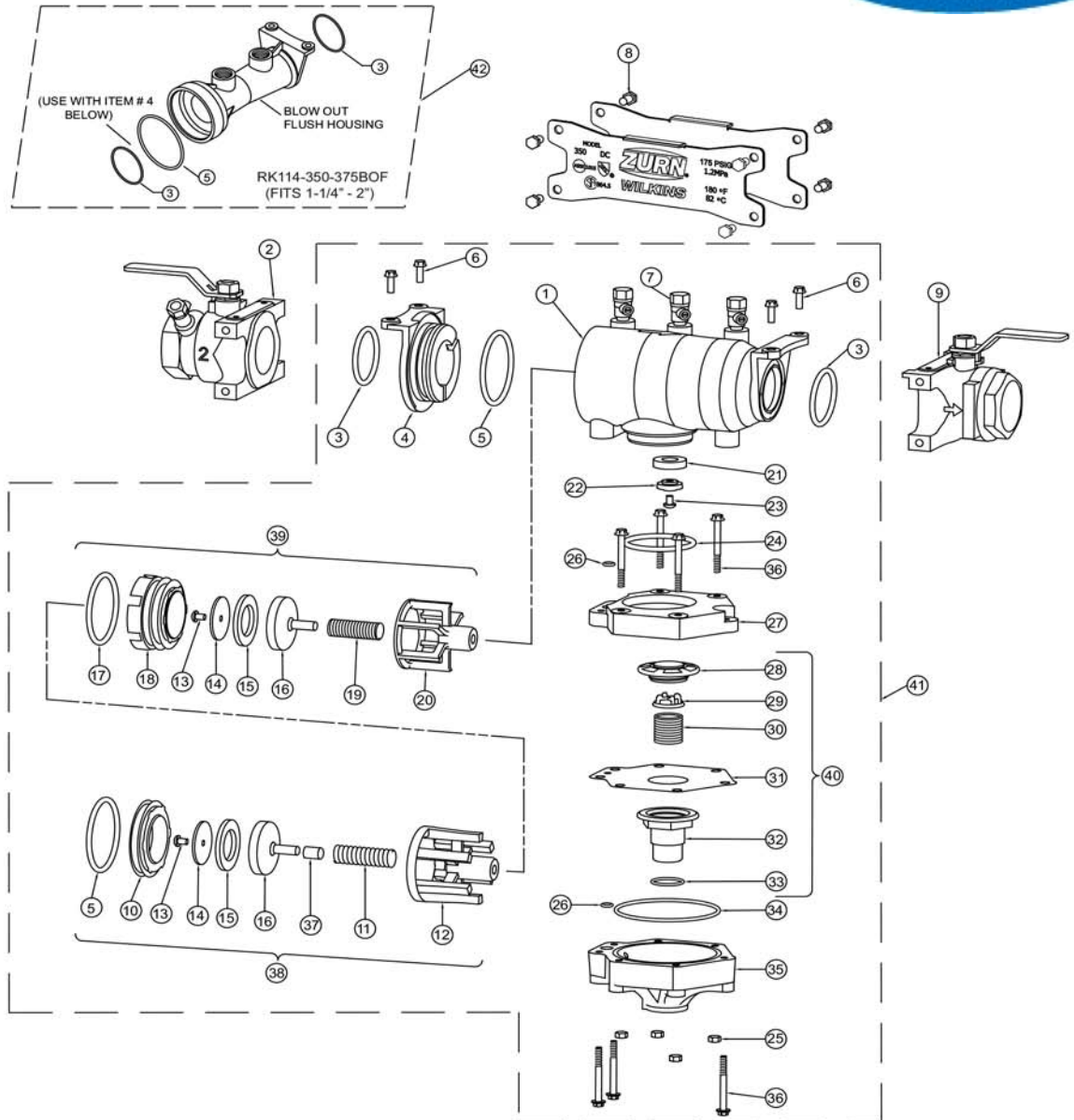
MONCTON: (506) 859-7277  
Toll Free: (877) 816-3473

MISSISSAUGA: (905) 565-1385

[www.nationalfire.com](http://www.nationalfire.com)

# MODEL 375XL – 1-1/4" to 2"

## Parts Drawing



### Repair Kit

**RK114-375R**

Size 1-1/4" - 2"

**RK114-375**

Size 1-1/4" -2"XL

**RK114-375V**

Size 1-1/4"-2"

| Item | Part Number | Qty. | Description |
|------|-------------|------|-------------|
| 3    | 331N        | 2    | O-RING      |
| 5    | 337N        | 2    | O-RING      |
| 16   | 374-12A     | 2    | SEAL WASHER |
| 18   | 336N        | 1    | O-RING      |
| 22   | 374-12      | 1    | SEAL WASHER |
| 25   | 334N        | 1    | O-RING      |
| 27   | WK-109N     | 2    | O-RING      |
| 32   | 374-43      | 1    | DIAPHRAGM   |
| 34   | 123N        | 1    | O-RING      |
| 35   | 243N        | 1    | O-RING      |

| Item | Part Number | Qty. | Description           |
|------|-------------|------|-----------------------|
| 3    | 331N        | 2    | O-RING                |
| 5    | 337N        | 1    | O-RING                |
| 39   | 374-300A    | 1    | #1 CHECK ASSY         |
| 40   | 374-300B    | 1    | #2 CHECK ASSY         |
| 22   | 374-12      | 1    | SEAL WASHER           |
| 23   | 374-14CU    | 1    | SEAL RETAINER         |
| 25   | 334N        | 1    | O-RING                |
| 27   | WK-109N     | 2    | O-RING                |
| 35   | 243N        | 1    | O-RING                |
| 41   | 374-50      | 1    | RELIEF VLV. STEM ASSY |

| Item | Qty. | Description          |
|------|------|----------------------|
| 42   | 1    | VESSEL W/CHECKS & RV |

### RK114-350-375BOF Size 1-1/4" -2"

| Item | Qty. | Description          |
|------|------|----------------------|
| 1    | 1    | BODY, BLOW OUT FLUSH |
| 3    | 2    | 331N O-RING          |
| 5    | 1    | 337N O-RING          |



**National Fire  
Equipment Ltd.**

TORONTO: (905) 761-6355  
Toll Free: (800) 267-8508

OTTAWA: (613) 723-6071

VANCOUVER: (604) 420-1131  
Toll Free: (800)-667-2138

BURNABY: (604)-299-4498

www.nationalfire.com

EDMONTON: (780) 455-3870  
Toll Free: (888)-891-1008

CALGARY: (403) 236-5661

MONCTON: (506) 859-7277  
Toll Free: (877) 816-3473

MISSISSAUGA: (905) 565-1385