

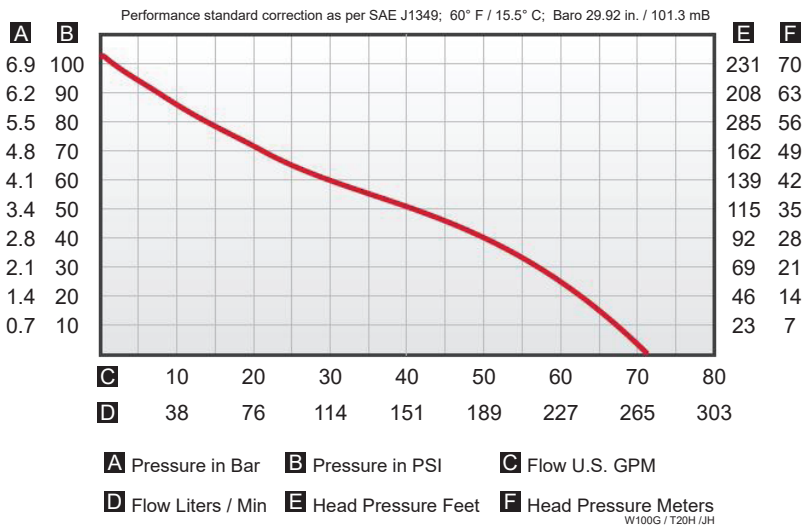


National Fire Equipment Ltd.

WICK 100G - 2 STROKE FIRE PUMP

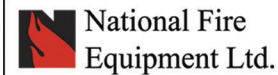
ULTRA LIGHTWEIGHT HIGH PERFORMANCE FIRE PUMP

- For Emergency Rescue Equipment used by forestry and other emergency services
- Powered by a Solo two stroke, 2.4 HP / 42 cc engine
- Nikasil cylinder wall for extended wear and low maintenance
- All position .. will operate on any slope
- Unique clutch feature
- Decompression switch for super easy starting
- Detachable (bolt-on) foam-compatible single-stage pump end
- Integral fuel tank provides approximately 40 minutes run time
- Remote fuel (RFT) model significantly extends operational time
- Lower carbon emissions than our previous models
- Optional electronic over-speed protection cut-out switch
- Optional transportable back pack



WEIGHT & DIMENSIONS		
Length	13.25"	33 cm
Width	11.0"	28 cm
Height	11.3"	29 cm
Weight	17.4 lbs	7.9 kg
Suction	1.5" NPSH	38 mm
Discharge	1.5" NPSH	38 mm
ENGINE		
Solo	2 stroke; 42 cc; 2.4 Hp	
Ignition	Electronic	
Cylinder	Nikasil	
Clutch Drive		
Fuel Tank Capacity	0.80 Qt US	761 ml (0.76 L)

Performance specifications can be subject to change without notice



TORONTO: (905) 761-6355
Toll Free: (800) 267-8508
OTTAWA: (613) 723-6071

VANCOUVER: (604) 420-1131
Toll Free: (800)-667-2138
BURNABY: (604)-299-4498

EDMONTON: (780) 455-3870
Toll Free: (888)-891-1008
CALGARY: (403) 236-5661

MONCTON: (506) 859-7277
Toll Free: (877) 816-3473
MISSISSAUGA: (905) 565-1385

www.nationalfire.com



National Fire Equipment Ltd.

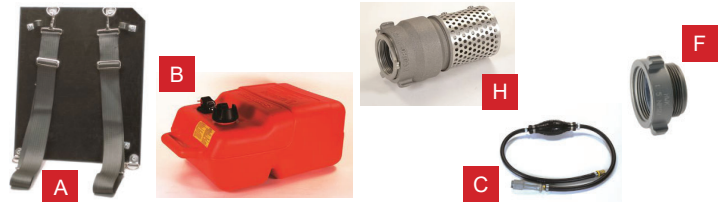
WICK 100G - 2 STROKE FIRE PUMP

Bid Specification

- The portable fire pump must have a 2.4 HP / 41 cc 2-stroke Solo engine
- The pump must be all position, able to operate on any slope
- The pump must be available with a transportable back pack
- The pump must come standard with a centrifugal clutch
- The pump must be equipped with a decompression switch for super-easy starting
- The pump must have a detachable (bolt-on) foam-compatible single-stage pump end
- The pump must have an integral fuel tank that provides approximately 40 minutes run time
- When requested, the pump must also have a remote fuel (RFT) connection.
- The remote fuel options must be available for Chrysler, Mercury or SAE style fuel connections
- When requested, the pump must be equipped with an electronic over-speed protection cut-out switch
- The pump must be equipped with an electronic ignition
- The pump must not weigh more than 17.4 lbs / 7.9 kg
- The engine cylinder walls must be Nikasil treated
- The pump must have minimum flow and pressures as shown in the performance chart on the opposite page



WICK® 100G (RFT MODEL)	
71WICK100G	WICK®100G (Without Remote fuel Option)
71WICK100GB	WICK®100G (With Vibration Pads)
71WICK100G-CO	WICK® 100G (with electronic C/O)
71WICK100G-RFT	WICK® 100G (Remote Fuel Kit Mercury model)
71WICK100G-RFTC	WICK® 100G (Remote Fuel Kit Chrysler model)
71WICK100GB-RFT	WICK® 100G (Remote Fuel Kit Mercury model with Vibration Pads)
71WICK100GB-RFTCO	WICK® 100G (Remote Fuel Kit Mercury model with vibration pads and electronic C/O)
71WICK100G-RFTCO	WICK® 100G (Remote Fuel Kit Mercury model with electronic C/O)
71WICK100G-RFTCCO	WICK® 100G (Remote Fuel Kit Chrysler model with electronic C/O)
71WICK100G-RFTUSDA	WICK® 100G USDA model (Remote Fuel Kit)
71WICK100G-RFTUSCO	WICK® 100G USDA model (Remote Fuel Kit with electronic C/O)
71WICK100G-RFT-Y	WICK® 100G Yamaha model (Remote Fuel Kit)



OPTIONAL		
A	71W25-HPACK	Back board for carrying
B	70FLPFT5	Fuel Tank .. 6.6 US Gal. / 25 Liters *
C	70FLPFL-M	Mercury fuel line
D	71W11-RFTKIT	Remote fuel kit for WICK 100G™ fire pump
E	70FLHPPQC	Hand Primer QC
F	70FL15TPPS	Thread protector 1 1/2" / 38mm
G	70FL15DLPS10	Draftlite HP suction hose .. 1 1/2"/38mm x 10'/3M c/w NPSH *
H	70FLFV15PF	Foot Valve / Strainer (Alum) 1 1/2"/38mm Female NPSH *