



National Fire Equipment Ltd.

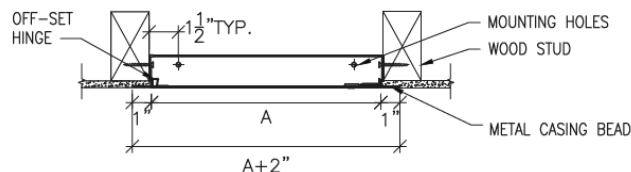
WBDW DRYWALL ACCESS DOOR & WBRDW RECESSED DRYWALL ACCESS DOOR



Door and Trim	16 ga. cold rolled steel door with 1" drywall bead and 24 ga. galvanized steel trim for mounting purposes
Frame	16 ga. cold rolled steel.
Hinge	Fully-concealed off-set hinge up to and including 24"x24". Number of hinges varies with size of the door and will be placed on long side of door unless otherwise specified. Doors larger than 24"x24" have full length piano hinge.

Latch	Flush, stainless steel cam operated with screwdriver. Latches are positioned opposite hinge as well as top and bottom on larger sizes.
Finish	White powder coat paintable finish
Options (at extra cost)	<ul style="list-style-type: none"> • Key Cylinder Lock with key (code 151) • Air-tight Neoprene Gasketing • Stainless Steel #304 or #316 (#4 satin finish)

The WBDW Drywall Access Door has the same quality features as the WBGD Premium with a tape-in drywall flange. This is designed to eliminate visual distraction, by allowing drywall cement to be applied to cover the flange at the time of installation.



Model No.	A x B Door Size	Hinges	Cam Latch	Shipping Weight (lbs) Steel/Stainless
WBDW-88	8"x8"	1	1	3
WBDW-1010	10"x10"	1	1	5
WBDW-1212	12"x12"	1	3	7
WBDW-1224	12"x24"	3	2	12
WBDW-1414	14"x14"	2	3	9
WBDW-1616	16"x16"	2	3	11
WBDW-1818	18"x18"	2	3	12
WBDW-2222	22"x22"	3	4	18

Model No.	A x B Door Size	Hinges	Cam Latch	Shipping Weight (lbs) Steel/Stainless
WBDW-2230	22"x30"	PH	4	24
WBDW-2236	22"x36"	PH	5	27
WBDW-2424	24"x24"	3	4	20
WBDW-2436	24"x36"	PH	5	27
WBDW-2448	24"x48"	PH	6	37
WBDW-3030	30"x30"	PH	6	29
WBDW-3036	30"x36"	PH	7	31
WBDW-3636	36"x36"	PH	9	42

Rough wall opening = door size + 1/4"

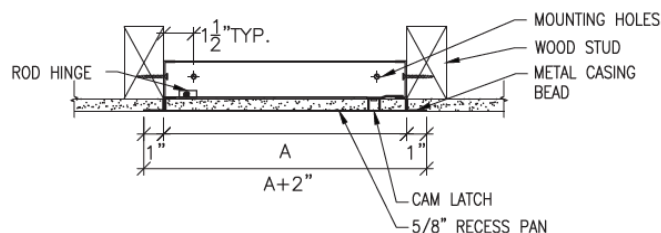
PH = Full length piano hinge



Door and Trim	16 ga. cold rolled steel. Door is recessed 5/8" to accept drywall.
Frame	16 ga. cold rolled steel. 1" wide perforated 24 ga. galvanized steel for mounting purposes.
Hinge	Fully concealed rod type hinge, will be placed on long side of door unless otherwise requested.

Latch	Flush, stainless steel cam operated with screwdriver. Latches are positioned opposite hinge as well as top and bottom on larger sizes.
Finish	White powder coat paintable finish
Options (at extra cost)	<ul style="list-style-type: none"> • Medium barrel cylinder lock • Drywall with door • Air-tight Neoprene Gasketing

The WBRDW Recessed Drywall Access Door features a 5/8" recessed pan that gives the option of installing a matching piece of drywall into the door panel, keeping the continuity of the visual area. The outdoor frame has a tape-in flange so that the unit may be cemented in place at the time of installation.



Model No.	A x B Door Size	Hinges	Cam Latch	Shipping Weight (lbs) Steel/Stainless
WBRDW-1212	12"x12"	1	1	6
WBRDW-1224	12"x24"	1	4	13
WBRDW-1616	16"x16"	1	3	12
WBRDW-1818	18"x18"	1	3	13
WBRDW-2424	24"x24"	1	4	21
WBRDW-2436	24"x36"	1	5	32

Rough wall opening = door size + 1/4"



**National Fire
Equipment Ltd.**

TORONTO: (905) 761-6355

Toll Free: (800) 267-8508

OTTAWA: (613) 723-6071

VANCOUVER: (604) 420-1131

Toll Free: (800)-667-2138

BURNABY: (604)-299-4498

EDMONTON: (780) 455-3870

Toll Free: (888)-891-1008

CALGARY: (403) 236-5661

MONCTON: (506) 859-7277

Toll Free: (877) 816-3473

MISSISSAUGA: (905) 565-1385

www.nationalfire.com