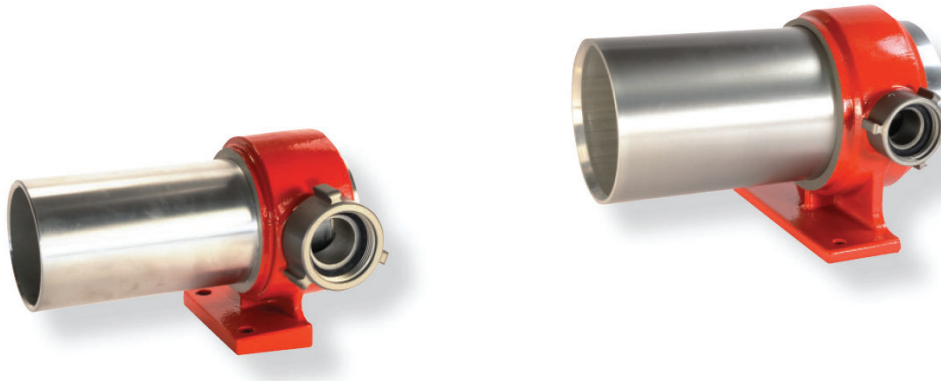




National Fire Equipment Ltd.

HYDRO-WICK® HOSE WASHERS



Specifically designed to clean forestry and municipal hose, these economical tools are compact, simple and very effective. Angled water jets accomplish the cleaning and aid in feeding the hose through the washer. The 1 1/2"/38mm inch hose washer cleans up to 1 1/2"/38mm hose equipped with threaded rocker lug or quarter turn fittings. The 3"/76mm hose washer cleans up to 3"/76mm hose equipped with threaded rocker lug. The 4"/102mm hose washer cleans up to 4"/102mm hose equipped with threaded rocker lug.

HYDRO-WICK® HOSE WASHERS	
Part#	Description
70FLHW15BS	1 1/2"/38mm BSP connection (Cleans up to 1 1/2"/38mm coupled hose)
70FLHW15NH	1 1/2"/38mm NH connection (Cleans up to 1 1/2"/38mm coupled hose)
70FLHW15PS	1 1/2"/38mm NPSH connection (Cleans up to 1 1/2"/38mm coupled hose)
70FLHW30NH	1 1/2"/38mm NH connection (Cleans up to 3"/76mm coupled hose)
70FLHW30PS	1 1/2"/38mm NPSH connection (Cleans up to 3"/76mm coupled hose)
70FLHW30BS	1 1/2"/38mm BSP connection (Cleans up to 3"/76mm coupled hose)
70FLHW40PS	1 1/2"/38mm NPSH connection (Cleans up to 4"/102mm coupled hose)



**National Fire
Equipment Ltd.**

TORONTO: (905) 761-6355
Toll Free: (800) 267-8508

OTTAWA: (613) 723-6071

VANCOUVER: (604) 420-1131
Toll Free: (800)-667-2138

BURNABY: (604)-299-4498

EDMONTON: (780) 455-3870
Toll Free: (888)-891-1008

CALGARY: (403) 236-5661

MONCTON: (506) 859-7277
Toll Free: (877) 816-3473

MISSISSAUGA: (905) 565-1385

www.nationalfire.com