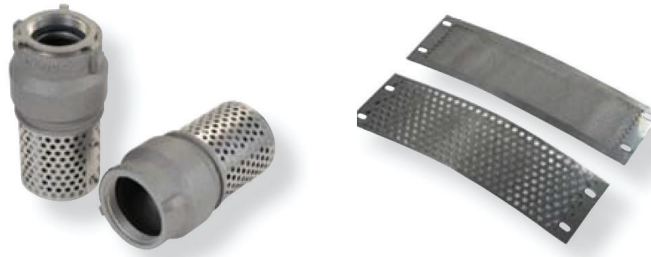




National Fire Equipment Ltd.

FOOT VALVE 1 1/2"/38mm; 2"/51mm



- 1 1/2"/38mm or 2"/51mm female NPSH aluminum foot valve and strainer designed for use with high pressure centrifugal pumps. The check valve is spring loaded to ensure instantaneous closure, and also features an external pressure release. The strainer is made of stainless steel for long life. Designed for flows up to 100 GPM US / 378 LPM

Part#	Description
70FLFV15NF	Foot Valve / Strainer (Alum) 1 1/2"/38mm Female NH
70FLFV15PF	Foot Valve / Strainer (Alum) 1 1/2"/38mm Female NPSH
626023	Foot Valve / Strainer 2"/51mm BSP Female
6255000	Foot Valve / Strainer 2"/51mm NPSH Female
70FLFV2RZ	Foot Valve / Strainer 2"/51mm Storz Female
70FLFV-1115S	Replacement Screen for 2"/51mm Foot Valve .. 5mm holes
70FLFV-2774	Replacement Screen for 2"/51mm Foot Valve .. 2.5mm holes



National Fire
Equipment Ltd.

TORONTO: (905) 761-6355
Toll Free: (800) 267-8508

OTTAWA: (613) 723-6071

VANCOUVER: (604) 420-1131
Toll Free: (800)-667-2138

BURNABY: (604)-299-4498

EDMONTON: (780) 455-3870
Toll Free: (888)-891-1008

CALGARY: (403) 236-5661

MONCTON: (506) 859-7277
Toll Free: (877) 816-3473

MISSISSAUGA: (905) 565-1385

www.nationalfire.com