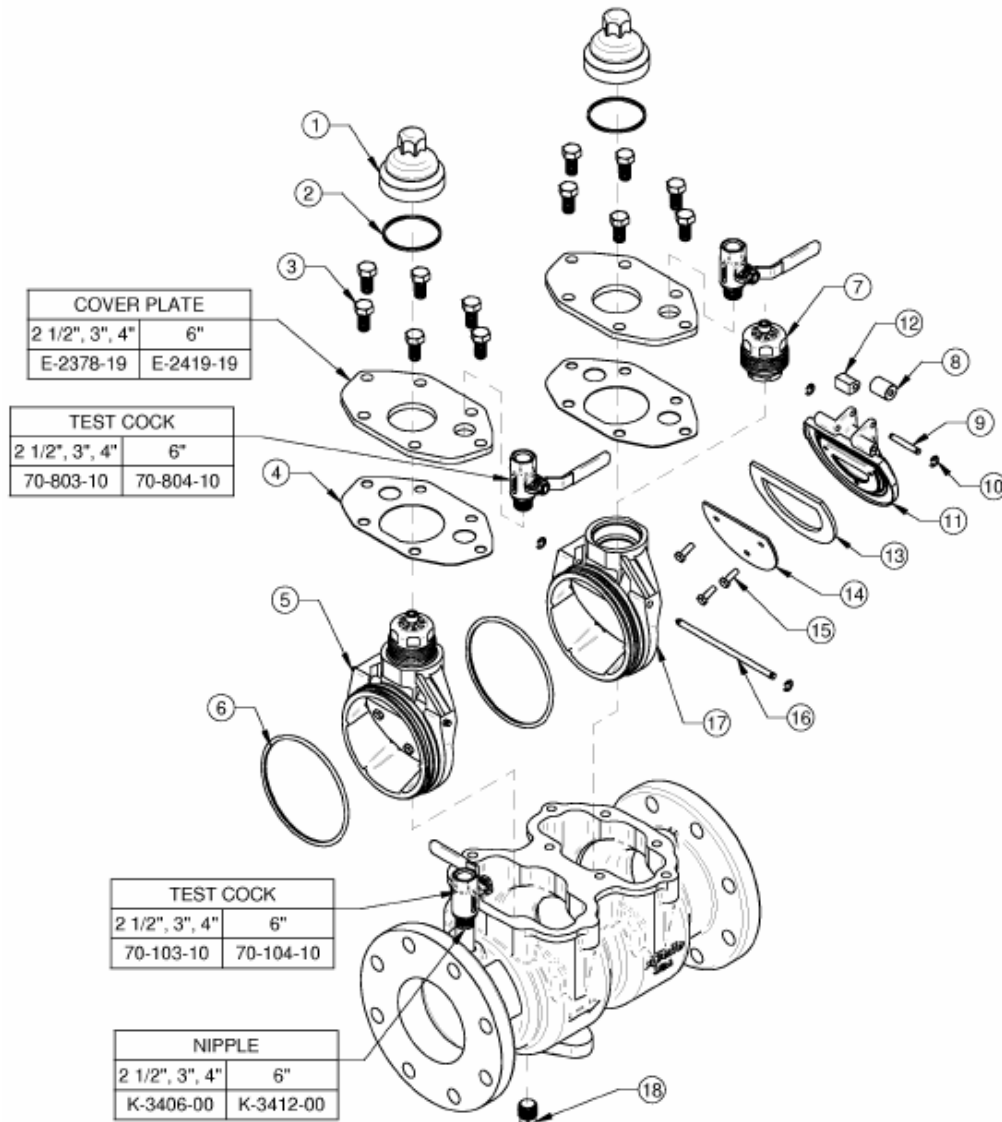


Double Check Backflow Preventer

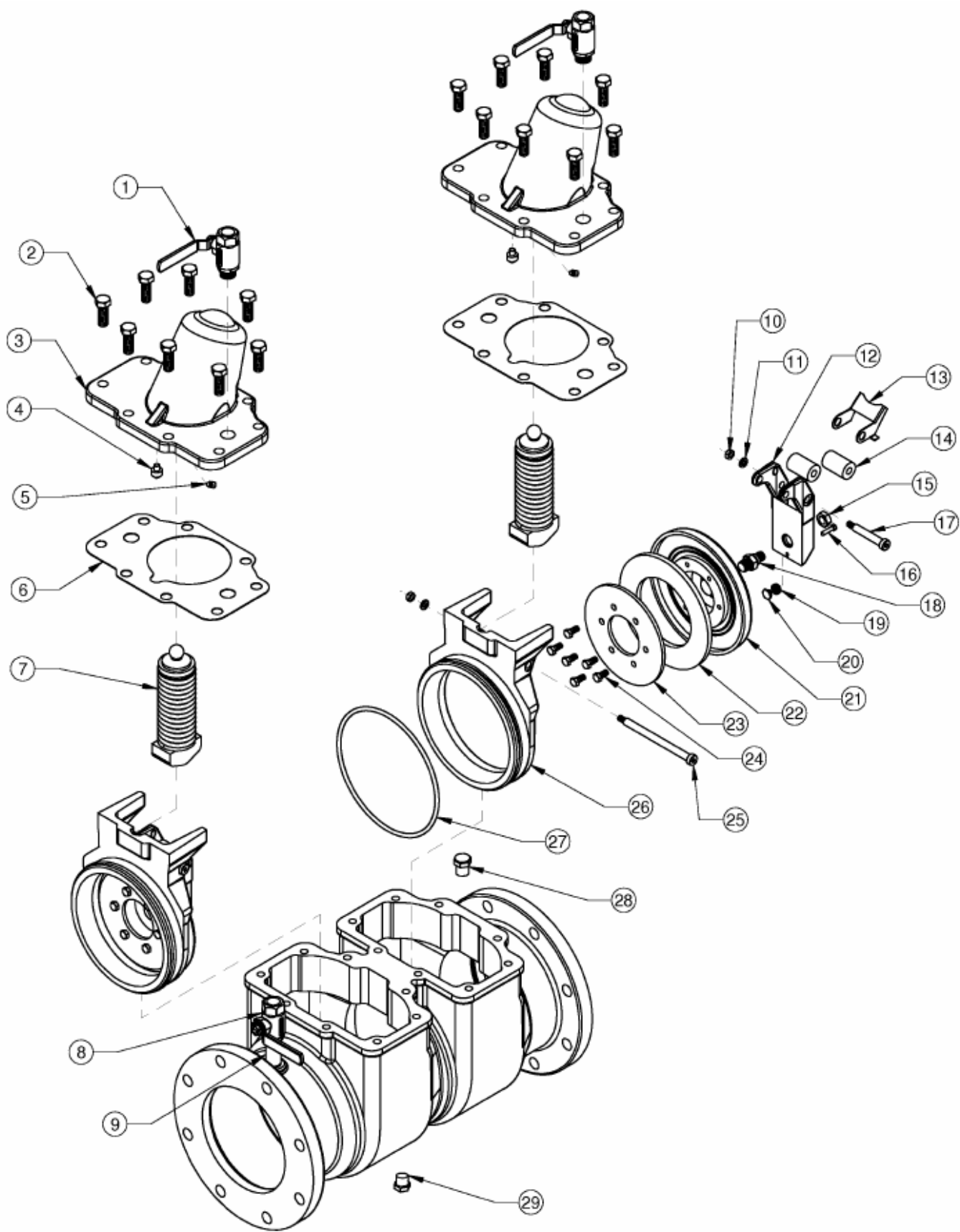
2 1/2" – 6"



ITEM #	DESCRIPTION	QTY.	PART #	ITEM #	DESCRIPTION	QTY.	PART #
1	Spring Cap	2	S-4877-00	12	Hinge Bushing	2	D-3685-00
2	O-Ring	2	D-3506-00	13	Seat Disc	2	D-3504-00
3	Cover Bolt	12	B-2083-00	14	Disc Plate	2	E-2379-00
4	Gasket	2	D-3505-00	15	Disc Ret. Bolt	6	B-1793-00
5	Check Assembly	2	W-7590-05	16	Hinge Pin	2	I-5868-06
6	O-Ring	2	D-3507-00	17	Seat Housing	2	F-3090-00
7	Spring Assembly	2	W-8393-00	18	Plug	2	K-3008-00
8	Roller	2	I-5866-00				
9	Roller Pin	2	I-5867-06				
10	"E" Clip	4	I-3144-00				
11	Swing Arm	2	G-3769-00				

REPAIR KITS FOR 2 1/2" – 6"

- Check Valve Repair Kit (Includes 1 each of items 2, 4, and 5).....4S-009-01
- Rubber Repair Kit (includes 1 each of items 2, 4, 6, 12, and 13).....4S-009-02



Double Check Backflow Preventer 8" & 10" DC

ITEM #	DESCRIPTION	QUANTITY	PART #
1	¾" Test Cock	2	70-804-10
2	Cap Bolt	16	B-1800-00
3	Cover	2	Q-5624-19
4	Pilot Pin	2	I-6411-06
5	Cam Bumper	2	I-6412-06
6	Gasket	2	D-3964-00
7	Spring Ass'y	2	W-4373-05
8	¾" Test Cock	1	70-104-10
9	¾" Nipple	1	K-3412-00
10	Nut	2	C-2039-00
11	Lock Washer	2	E-2276-00
12	Swing Arm	1	F-3235-05
13	Positioner	1	I-6441-00
14	Cam Roller	2	I-6410-00
15	Stem Nut	2	C-2040-00
16	Compensator Bolt	2	B-2183-00
17	Roller Pin	2	B-2518-00
18	Check Stem	2	G-3980-06
19	Compensator Spring	2	A-1459-00
20	Spring Button	2	E-2497-06
21	Seal Retainer	2	F-3225-05
22	Seat Disc	2	D-3961-00
23	Disc Plate	2	E-2494-00
24	Disc Retainer Bolt	12	B-1754-00
25	Hinge Pin	2	B-2517-00
26	Seat	2	L-6137-05
27	Seat O-ring	2	D-3963-00
28	¾" Plug	1	K-3010-00
29	½" Plug	1	K-3008-00

REPAIR KITS FOR 8" & 10"

Check Valve Repair Kit (Includes items 6 and 10-27, repairs 1 check valve).....4S-00E-06
 Rubber Repair Kit (includes 1 each of items 6, 22, and 27).....4S-00E-04