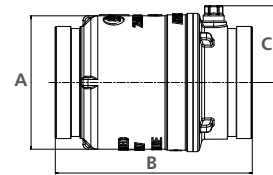
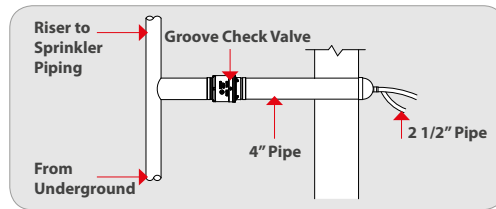







National Fire Equipment Ltd.

**A140 SWING CHECK VALVE**



SIZE (a x b)	CERTIFICATIONS	A	B	C
4" x 4"	  	5 23/64"	7 29/32"	3"

Used to allow flow in designated direction only and to prevent backflow.

Can be installed in both vertical and horizontal position.

4" Groove inlet and outlet.

250 PSI rated pressure.

