



National Fire Equipment Ltd.

CKSW Swing Check Valve

Model: CKSW Swing Check Valve

APPLICATIONS: WATER/AIR

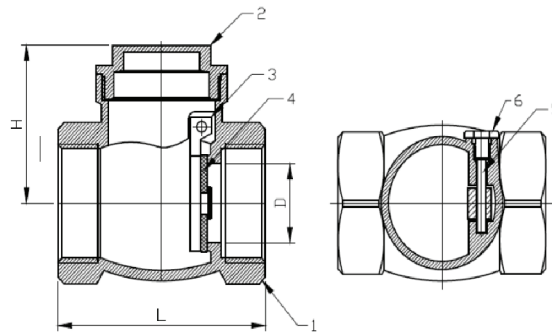
WORKING PRESSURE: 200PSI

DESCRIPTION: The model CKSW swing check valve features a full soft seated EPDM clapper assembly which provides for a positive seal each time.

INSTALLATION: These valves should be installed in the horizontal position but can be installed in the vertical up position as long as the flow arrow on the body points up.



| Item | Drawing No. | Name | Material |
|------|---------------|-----------|----------|
| 1 | JY-4005-20-01 | Nut | Hpb57-3 |
| 2 | JY-4005-20-02 | Pin | 304 |
| 3 | JY-4005-20-03 | Seal Ring | EPDM 60° |
| 4 | JY-4005-20-04 | Disc | Hpb57-3 |
| 5 | JY-4005-20-05 | Bonnet | Hpb57-3 |
| 6 | JY-4005-20-06 | Body | Hpb57-3 |



| | | CKSW050NB | CKSW075NB | CKSW100NB | CKSW125NB | CKSW150NB | CKSW200NB |
|------|-------------------|-----------|-----------|-----------|-----------|-----------|-----------|
| Size | NPT END TO END | 1/2" | 3/4" | 1" | 1 1/4" | 1 1/2" | 2" |
| L | | 47 | 57 | 64 | 70 | 83 | 94 |
| H | | 34 | 38 | 45 | 51 | 57 | 65 |
| D | | 13 | 17 | 22 | 28 | 33 | 38 |