

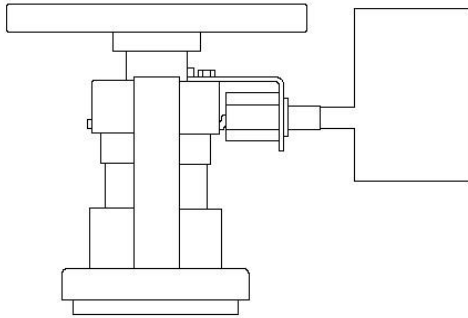


# National Fire Equipment Ltd.

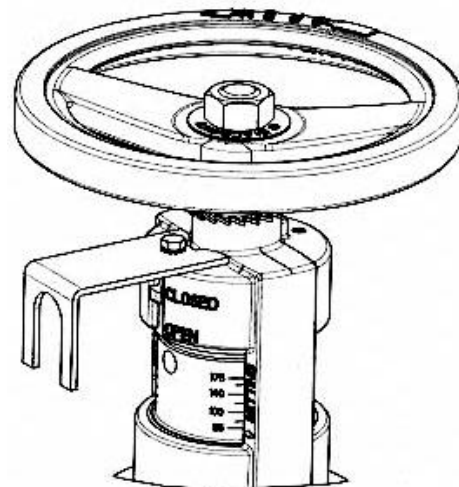
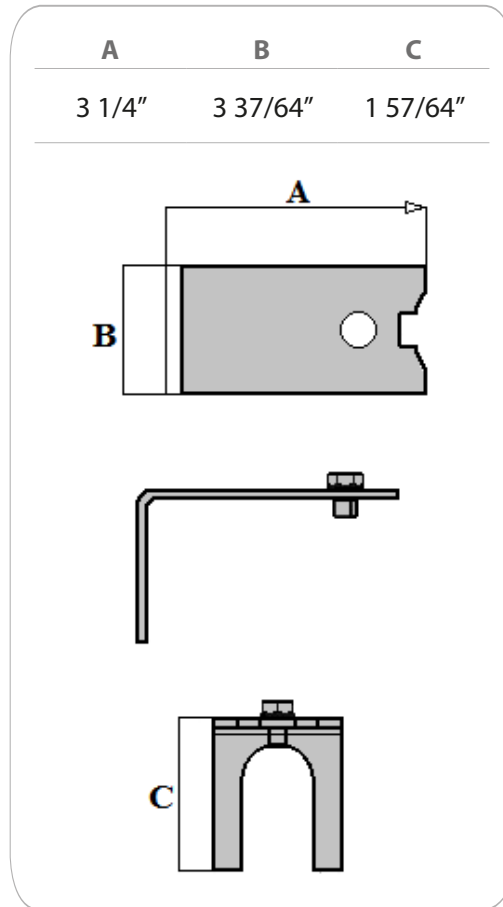
## A170 MONITOR SWITCH BRACKET

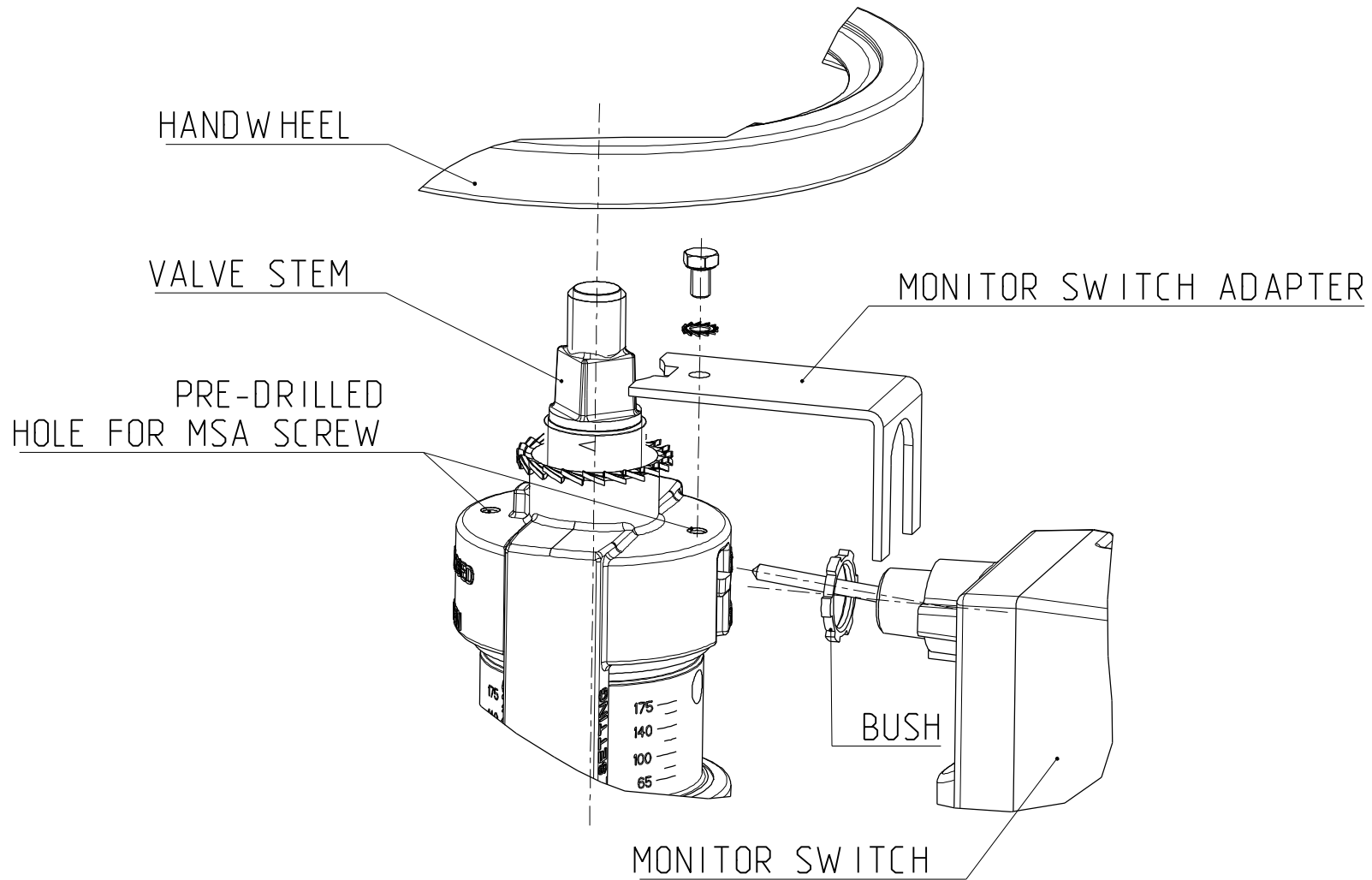



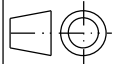
To be installed on pressure reducing valves A201 - A202 - A203 - A204 to connect the monitor switch.



*Consider using System Sensor model PIBV2 supervisory switch*





<b>GIACOMINI</b> Technology in Comfort <a href="http://www.giacomini.com">www.giacomini.com</a> 	SCALA	MATERIALE		PESO	DISEGNATORE
	1:2	-	-	0.000	<i>M. Savoini</i>
Ufficio Tecnico		TRATTAMENTO	DUREZZA	CONTR.	DATA
A201 2-1/2F NPT SQ. ASSEMBLY DRAWING		-	-	-	09-03-09
		CODICE	CODICE INT	 N.PEZZI	PROGETTO N° 07045
		A201Y001	00.01.SAV.0151		
		QUOTE SENZA TOLLERANZA			