



# National Fire Equipment Ltd.

## BB-G Bronze Butterfly Valve - Grooved Type

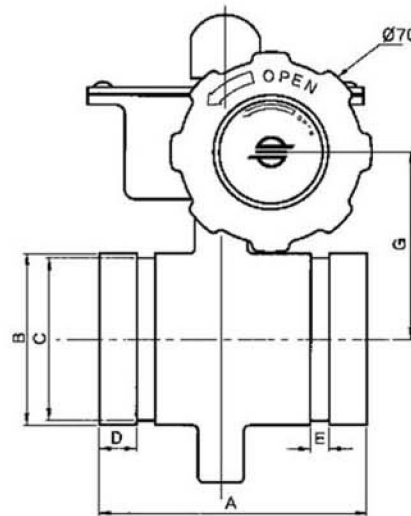
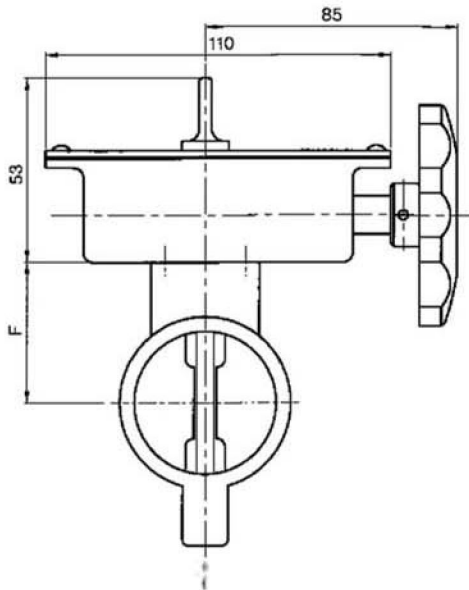


### Specifications

Size: 2" - 2 1/2"  
 Working Pressure: 175PSI (12.5 Bars)  
 Max. Text Pressure: 350PSI (25.0 Bars)  
 Working Temperature: 250 °F (120 °C)  
 Factory Installed UL Approved Tampered Switch for indoor use only

### Materials

Body: Brass, Bronze  
 Disc: Brass, Ductile, Icon, EPDM Encapsulated  
 Stem: Stainless Steel, Hardened & Tempered



### Dimensions

(Unit: mm/inch)

Size	A	B	C	D	E	F	G	Wt.Kg(lbs)
2	114 (4.49)	60.3 (2.37)	57.1 (2.25)	15.8 (0.62)	7.9 (0.31)	50 (1.97)	65 (2.56)	2.2 (4.84)
2 1/2	114 (4.49)	73.0 (2.87)	69.0 (2.72)	15.8 (0.62)	7.9 (0.31)	50 (1.97)	65 (2.56)	2.4 (5.28)



National Fire  
Equipment Ltd.

TORONTO: (905) 761-6355  
Toll Free: (800) 267-8508

OTTAWA: (613) 723-6071

VANCOUVER: (604) 420-1131  
Toll Free: (800)-667-2138

BURNABY: (604)-299-4498

EDMONTON: (780) 455-3870  
Toll Free: (888)-891-1008

CALGARY: (403) 236-5661

MONCTON: (506) 859-7277  
Toll Free: (877) 816-3473

MISSISSAUGA: (905) 565-1385

www.nationalfire.com



# National Fire Equipment Ltd.

## BB-T Bronze Butterfly Valve - Threaded Type

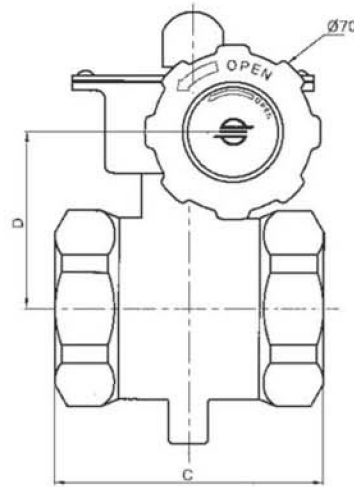
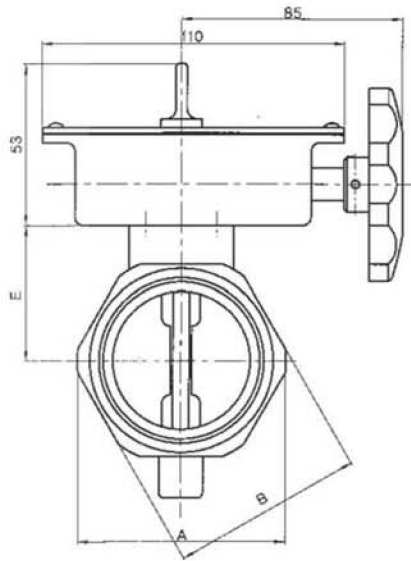


### Specifications

Size: 1" - 2 1/2"  
 Working Pressure: 175PSI (12.5 Bars)  
 Max. Text Pressure: 350PSI (25.0 Bars)  
 Working Temperature: 250 °F (120 °C)  
 Factory Installed UL Approved Tampered Switch for Indoor Use Only

### Materials

Body: Brass, Bronze  
 Disc: Brass, Ductile, Icon, EPDM Encapsulated  
 Stem: Stainless Steel, Hardened & Tempered



### Dimensions

(Unit: mm/inch)

Size	A	B	C	D	E	Wt.Kg(Lbs)
1"	43.7 (1.72)	39.7 (1.56)	54.0 (2.13)	52 (2.05)	37 (1.46)	1.5 (3.30)
1 1/4"	53.2 (2.09)	49.0 (1.93)	67.0 (2.64)	56 (2.20)	41 (1.61)	1.7 (3.74)
1 1/2"	58.5 (2.39)	56.0 (2.20)	73.0 (2.87)	59 (2.32)	44 (1.73)	1.8 (3.96)
2"	76.0 (2.99)	70.0 (2.76)	82.4 (3.24)	64 (2.52)	49 (1.93)	2.4 (5.28)
2 1/2"	89.0 (3.50)	84.0 (3.31)	104 (4.09)	65 (2.56)	50 (1.97)	3.1 (6.62)



National Fire  
Equipment Ltd.

TORONTO: (905) 761-6355  
Toll Free: (800) 267-8508

OTTAWA: (613) 723-6071

VANCOUVER: (604) 420-1131  
Toll Free: (800)-667-2138

BURNABY: (604)-299-4498

EDMONTON: (780) 455-3870  
Toll Free: (888)-891-1008

CALGARY: (403) 236-5661

MONCTON: (506) 859-7277  
Toll Free: (877) 816-3473

MISSISSAUGA: (905) 565-1385

www.nationalfire.com



# National Fire Equipment Ltd.

## Butterfly Valve Switch Wiring Diagram

