



National Fire Equipment Ltd.

Apollo 400 - 20 Reduced Pressure Assemblies 2 1/2" - 6"

PARTS LIST - 2-1/2", 3", 4", 6" RPZ

ITEM NO	DESCRIPTION	QUANTITY	PART NO			
			2-1/2"	3"	4"	6"
1	Shut-Off Valve (OS&Y)	2	W678900	W679000	W682400	W682500
1	Shut-Off Valve (NRS)	2	W678500	W678600	W674300	W674400
2	Brass Nipple	1	K340600	K340600	K340600	K341240
3	Test Cock	1	7010301	7010301	7010301	7010401
4	Flange Nut	*	C169100	C169100	C169100	C175900
5	Ring Gasket	2	D258300	D258400	D258200	D257900
6	Flange Bolt	*	B180400	B180400	B182800	B182900
7	Body	1	Q452919	Q453219	Q453819	
8	Nameplate	1	I440600	I440600	I440600	
9	Drive Screw	2	I261300	I261300	I261300	I261300
10	C.V. Seat O-Ring	2	D256700	D256700	D257300	D257600
11	C.V. Seat	2	L463705	L463705	L464005	L464405
12	C.V. Stem	2	G323906	G323906	G324206	G324600
13	C.V. Stem O-Ring	2	D256100	D256100	D256100	D257600
14	Retainer Nut	2	C175600	C175600	C175600	C176000
15	Retainer Washer	2	E219900	E219900	E220400	E220500
16	C.V. Seat Disc	2	D256000	D256000	D257200	D257500
17	Seat Disc Holder	2	F300005	F300005	F300105	F300205
18	1st Check Spring	1	A174000	A174000	A174300	A174500
19	2nd Check Spring	1	A174100	A-174100	A174400	A174600
20	Spring Retainer	2	E219805	E219805	E220205	E220305
21	Jam Nut	2	C158905	C158905	C158905	C170600
22	Cap O-Ring	2	D256600	D256600	D257400	D257700
23	C.V. Cap	2	Q453019	Q453019	Q453319	Q453719
24	Cap Bolt	12	B179700	B179700	B180100	B180000
25	Test Cock	3	7080301	7080301	7080301	7080401

*2-1/2" & 3" QTY = 8 / 4" QTY = 16 / 6" QTY = 24



National Fire
Equipment Ltd.

TORONTO: (905) 761-6355
Toll Free: (800) 267-8508

OTTAWA: (613) 723-6071

VANCOUVER: (604) 420-1131
Toll Free: (800)-667-2138

BURNABY: (604)-299-4498

EDMONTON: (780) 455-3870
Toll Free: (888)-891-1008

CALGARY: (403) 236-5661

MONCTON: (506) 859-7277
Toll Free: (877) 816-3473

MISSISSAUGA: (905) 565-1385

www.nationalfire.com

PARTS LIST - 2-1/2" - 6" RELIEF VALVES

ITEM NO	DESCRIPTION	2-1/2" - 6"		8" - 10"	
		QUANTITY	PART NO	QUANTITY	PART NO
26	Relief Valve Cover Bolt	7	B179600	7	B170300
27	1/2 NPT Plug	1	K300800	N/A	N/A
27	3/4 NPT Plug	N/A	N/A	1	K301000
28	Relief Valve Cover	1	Q453105	1	Q454219
29	Relief Valve Diaphragm	1	D256400	1	D259100
30	Relief Valve Seat Ring	1	L463805	1	L465105
31	Relief Valve Seat Ring	1	D256800	1	D2593-00
32	Relief Valve Body	1	Q453505	1	Q454119
33	Small Relief Valve O-Ring	1	D257000	1	D218600
34	Large Relief Valve O-Ring	1	D257100	1	D230400
35	Relief Valve Flange Bolt	2	B180000	4	B166900
36	1/4 NPT Plug	1	K301900	1	K301900
37	Relief Valve Flange Bolt	2	B179200	2	B166900
38	Pan Head Screw	2	B175300	1	B185600
39	Relief Valve Seat Washer	1	E220000	1	E221000
40	Relief Valve Seat Disc	1	D256300	1	D259500
41	Relief Valve Stem	1	G324000	1	G327405
42	Relief Valve Stem O-Ring	1	D256500	1	D259400
43	Relief Valve Bushing O-Ring	1	D256200	1	D259200
44	Relief Valve Bushing	1	L463915	1	L465215
45	Relief Valve Spring	1	A174200	1	A174900
46	Diaphragm Plate	1	E220100	2	E220905
47	Stem Face O-Ring	N/A	N/A	1	D210600
48	Diaphragm Bolt	N/A	N/A	1	B180000

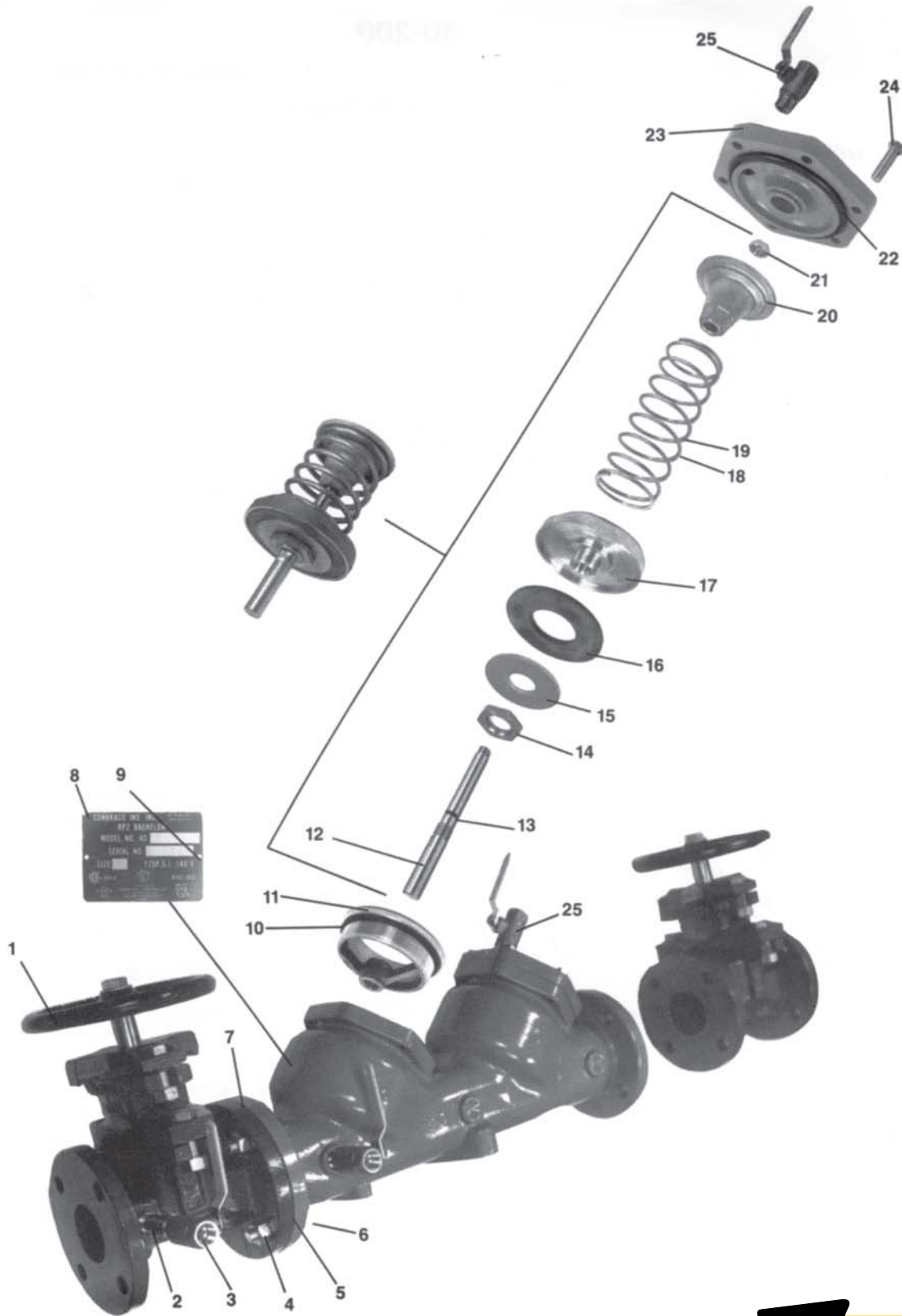
REPAIR KITS

KIT	PARTS INCLUDED	PART NO				
		2-1/2", 3"	4"	6"	8"	10"
1st Check Valve Repair Kit	12, 13, 14, 15, 16, 17, 18, 20, 21, 22	4000901	4000A01	4000C01	4000E01	4000G01
2nd Check Valve Repair Kit	12, 13, 14, 15, 16, 17, 19, 20, 21, 22	4000902	4000A02	4000C02	4000E02	4000G02
Seat Repair Kit	10, 11, 22	4000903	4000A03	4000C03	4000E03	4000G03
Check Rubber Repair Kit (2 of each part)	10, 13, 16, 22	4000904	4000A04	4000C04	4000E04	4000G04
Relief Valve Repair Kit	29, 30, 31, 33, 34, 38, 39, 40, 41, 42, 43, 44, 45, 46, (47, 48)*	4000905	4000A05	4000C05	4000E05	4000G05
Air Gap Drain	29, 31, 33, 34, 40, 42, 43, (47)*	4000906	4000A06	4000C06	4000E06	4000G06

*8" & 10" Only



PART NUMBER DIAGRAM - 2-1/2", 3", 4", 6" RPZ



National Fire Equipment Ltd.

TORONTO: (905) 761-6355
Toll Free: (800) 267-8508
OTTAWA: (613) 723-6071

VANCOUVER: (604) 420-1131
Toll Free: (800)-667-2138
BURNABY: (604)-299-4498
www.nationalfire.com

EDMONTON: (780) 455-3870
Toll Free: (888)-891-1008
CALGARY: (403) 236-5661

MONCTON: (506) 859-7277
Toll Free: (877) 816-3473
MISSISSAUGA: (905) 565-1385

PART NUMBER DIAGRAM - 2-1/2" - 6" RELIEF VALVES

2-1/2" - 6" Relief Valve



8" & 10" Relief Valve

