



# National Fire Equipment Ltd.

## MALE OPEN SNOOT

### A91



Used to connect fire hose standpipe or sprinkler system.

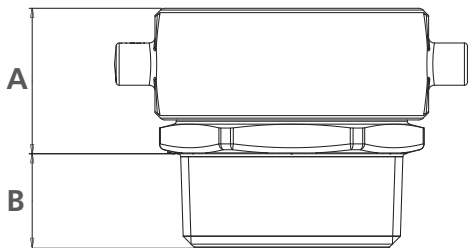
FEMALE (SWIVEL) x MALE

Standard equipment:  
Forged brass with female (pin lug swivel) hose inlet x male NPT outlet.

Swivel furnished with pin or rocker lugs.

Optional Finishes:

- PB
- RC
- PC



a	b
1-1/2"	1-1/2"
2-1/2"	2"
2-1/2"	2-1/2"
2-1/2"	3"

	1-1/2" x 1-1/2"	2-1/2" x 2"	2-1/2" x 2-1/2"	2-1/2" x 3"
A	8-5/8"	10-57/64"	10-57/64"	10-31/32"
B	13/16"	51/64"	1-15/64"	1-13/64"

National Fire Equipment Ltd.

40 Edilcan Drive, Concord, ON L4K 3S6  
Tel: (905) 761-6355 Fax: (905) 761-6458