

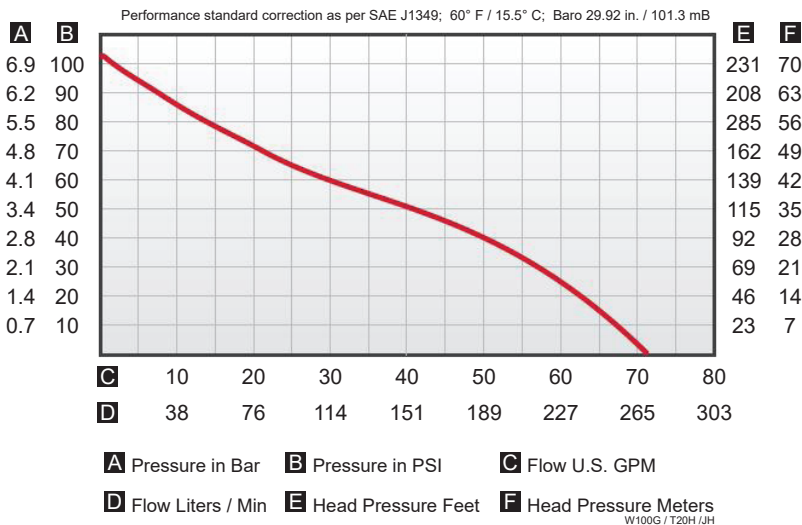


# National Fire Equipment Ltd.

## WICK 100G - 2 STROKE FIRE PUMP

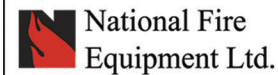
### ULTRA LIGHTWEIGHT HIGH PERFORMANCE FIRE PUMP

- For Emergency Rescue Equipment used by forestry and other emergency services
- Powered by a Solo two stroke, 2.4 HP / 42 cc engine
- Nikasil cylinder wall for extended wear and low maintenance
- All position .. will operate on any slope
- Unique clutch feature
- Decompression switch for super easy starting
- Detachable (bolt-on) foam-compatible single-stage pump end
- Integral fuel tank provides approximately 40 minutes run time
- Remote fuel (RFT) model significantly extends operational time
- Lower carbon emissions than our previous models
- Optional electronic over-speed protection cut-out switch
- Optional transportable back pack



WEIGHT & DIMENSIONS		
Length	13.25"	33 cm
Width	11.0"	28 cm
Height	11.3"	29 cm
Weight	17.4 lbs	7.9 kg
Suction	1.5" NPSH	38 mm
Discharge	1.5" NPSH	38 mm
ENGINE		
Solo	2 stroke; 42 cc; 2.4 Hp	
Ignition	Electronic	
Cylinder	Nikasil	
Clutch Drive		
Fuel Tank Capacity	0.80 Qt US	761 ml (0.76 L)

Performance specifications can be subject to change without notice



TORONTO: (905) 761-6355  
Toll Free: (800) 267-8508  
OTTAWA: (613) 723-6071

VANCOUVER: (604) 420-1131  
Toll Free: (800)-667-2138  
BURNABY: (604)-299-4498

EDMONTON: (780) 455-3870  
Toll Free: (888)-891-1008  
CALGARY: (403) 236-5661

MONCTON: (506) 859-7277  
Toll Free: (877) 816-3473  
MISSISSAUGA: (905) 565-1385

www.nationalfire.com



# National Fire Equipment Ltd.

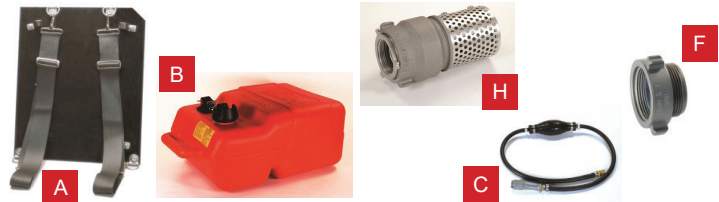
## WICK 100G - 2 STROKE FIRE PUMP

### Bid Specification

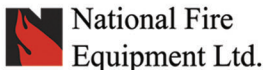
- The portable fire pump must have a 2.4 HP / 41 cc 2-stroke Solo engine
- The pump must be all position, able to operate on any slope
- The pump must be available with a transportable back pack
- The pump must come standard with a centrifugal clutch
- The pump must be equipped with a decompression switch for super-easy starting
- The pump must have a detachable (bolt-on) foam-compatible single-stage pump end
- The pump must have an integral fuel tank that provides approximately 40 minutes run time
- When requested, the pump must also have a remote fuel (RFT) connection.
- The remote fuel options must be available for Chrysler, Mercury or SAE style fuel connections
- When requested, the pump must be equipped with an electronic over-speed protection cut-out switch
- The pump must be equipped with an electronic ignition
- The pump must not weigh more than 17.4 lbs / 7.9 kg
- The engine cylinder walls must be Nikasil treated
- The pump must have minimum flow and pressures as shown in the performance chart on the opposite page



WICK® 100G (RFT MODEL)	
71WICK100G	WICK®100G (Without Remote fuel Option)
71WICK100GB	WICK®100G (With Vibration Pads)
71WICK100G-CO	WICK® 100G (with electronic C/O)
71WICK100G-RFT	WICK® 100G (Remote Fuel Kit Mercury model)
71WICK100G-RFTC	WICK® 100G (Remote Fuel Kit Chrysler model)
71WICK100GB-RFT	WICK® 100G (Remote Fuel Kit Mercury model with Vibration Pads)
71WICK100GB-RFTCO	WICK® 100G (Remote Fuel Kit Mercury model with vibration pads and electronic C/O)
71WICK100G-RFTCO	WICK® 100G (Remote Fuel Kit Mercury model with electronic C/O)
71WICK100G-RFTCCO	WICK® 100G (Remote Fuel Kit Chrysler model with electronic C/O)
71WICK100G-RFTUSDA	WICK® 100G USDA model (Remote Fuel Kit)
71WICK100G-RFTUSCO	WICK® 100G USDA model (Remote Fuel Kit with electronic C/O)
71WICK100G-RFT-Y	WICK® 100G Yamaha model (Remote Fuel Kit)



OPTIONAL		
A	71W25-HPACK	Back board for carrying
B	70FLPFT5	Fuel Tank .. 6.6 US Gal. / 25 Liters *
C	70FLPFL-M	Mercury fuel line
D	71W11-RFTKIT	Remote fuel kit for WICK 100G™ fire pump
E	70FLHPPQC	Hand Primer QC
F	70FL15TPPS	Thread protector 1 1/2" / 38mm
G	70FL15DLPS10	Draftlite HP suction hose .. 1 1/2"/38mm x 10'/3M c/w NPSH *
H	70FLFV15PF	Foot Valve / Strainer (Alum) 1 1/2"/38mm Female NPSH *



TORONTO: (905) 761-6355  
Toll Free: (800) 267-8508  
OTTAWA: (613) 723-6071

VANCOUVER: (604) 420-1131  
Toll Free: (800)-667-2138  
BURNABY: (604)-299-4498

EDMONTON: (780) 455-3870  
Toll Free: (888)-891-1008  
CALGARY: (403) 236-5661

MONCTON: (506) 859-7277  
Toll Free: (877) 816-3473  
MISSISSAUGA: (905) 565-1385

www.nationalfire.com

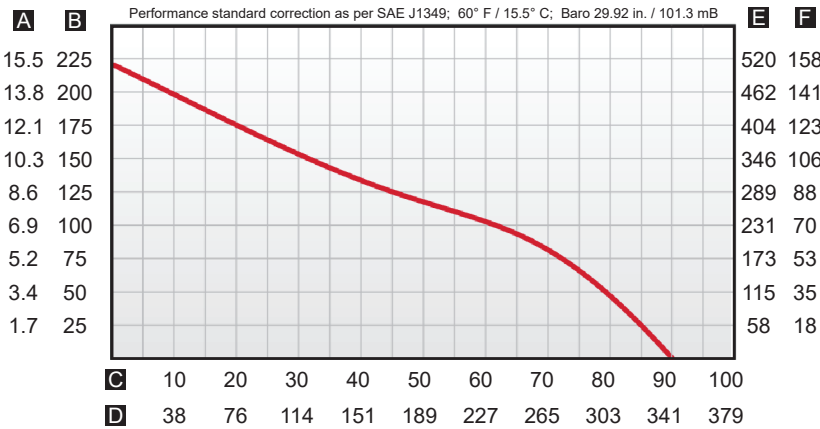


# National Fire Equipment Ltd.

## WICK 250 - 2 STROKE 3 STAGE FIRE PUMP

### PORTABLE THREE STAGE HIGH PRESSURE FIRE PUMP

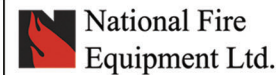
- For Emergency Rescue Equipment used by forestry and other emergency services
- Light-weight, very stable, economical and high performance are the hallmarks of the WICK® 250
- Best performance of all fire pumps in its' class
- 8 HP, 2-stroke engine coupled to a three-stage foam-compatible pump
- Electronic over-speed protection cut-out switch
- See chart for available fuel connection models
- Overall design for exceptional ease in maintenance
- Optional U.S.D.A. (United States Department of Agriculture) approved spark arrestor
- Optional transportable back pack



**A** Pressure in Bar    **B** Pressure in PSI    **C** Flow U.S. GPM  
**D** Flow Liters / Min    **E** Head Pressure Feet    **F** Head Pressure Meters  
W250 / T20H / JH

WEIGHT & DIMENSIONS		
Length	15.3"	39 cm
Width	13.0"	33 cm
Height	12.5"	31.8 cm
Weight (Dry)	31 lbs	14.1 kg
Suction	2.0"	50 mm NPSH
Discharge	1 ½"	38 mm NPSH
ENGINE		
Hydro-Wick series	2 stroke 134 cc	
Power	8 HP	
Ignition	Electronic breakerless	
Fuel Mixture	24:1	

Specifications can be subject to change without notice



<p>TORONTO: (905) 761-6355 Toll Free: (800) 267-8508</p> <p>OTTAWA: (613) 723-6071</p>	<p>VANCOUVER: (604) 420-1131 Toll Free: (800)-667-2138</p> <p>BURNABY: (604)-299-4498</p>	<p>EDMONTON: (780) 455-3870 Toll Free: (888)-891-1008</p> <p>CALGARY: (403) 236-5661</p>	<p>MONCTON: (506) 859-7277 Toll Free: (877) 816-3473</p> <p>MISSISSAUGA: (905) 565-1385</p>
--	---	--	---

[www.nationalfire.com](http://www.nationalfire.com)



# National Fire Equipment Ltd.

## WICK 250 2 STROKE 3 STAGE FIRE PUMP

### Bid Specification

- The portable fire pump must have an 8 HP 2-stroke engine
- The engine must be coupled to a three stage foam compatible pump end
- It must be equipped with an electronic over-speed protection cut-out switch
- The weight shall not exceed 31 lbs / 14.1 kg
- The pump must have a detachable rewind starter for emergency rope start
- The fuel connection must be available with Chrysler, Mercury or SAE style quick-connect
- When requested, the pump must be equipped with a USDA approved spark arrestor
- The pump must be available with a transportable back pack
- The pump must have minimum flow and pressures as shown in the performance chart on the opposite page



### WICK® 250

Part#	Description
71WICK250-AC	WICK® 250 Fire Pump - Chrysler connection
71WICK250-MAC	WICK® 250 Fire Pump - Mercury connection
71WICK250-MAQC	WICK® 250 Fire Pump - Mercury connection (low tone muffler model)
71WICK250-SAEA	WICK® 250 Fire Pump - SAE connection - c/w Spark Arrestor



C1



E



H



### OPTIONAL

A	71W25-HPACK	Back board for carrying
B	70FLPFT5	Fuel Tank .. 6.6 US Gal. / 25 Liters *
C1	70FLPFL-M	Mercury fuel line
C2	70FLPFL	Chrysler fuel line
C3	70FLPFL-GSA	GSA / SAE fuel line
D1	70FLHPPQC	Hand Primer QC
D2	70FLHPPPS	Hand Primer NPSH
D3	70FLHPPNH	Hand Primer NH
E	70FL15TPPS	Thread protector 1 1/2" / 38mm
E	70FL20TPPS	Thread protector 2" / 51mm
E	6124NM24PF	Adaptor .. 1 1/2" / 38mm NH Male x 1 1/2" / 38mm NPSH Female
F	71W37-SPKARR	Spark Arrestor
G	70FL20DLPS10	Draftlite HP suction hose ..2"/51mm x 10'/3M c/w NPSH *
H	70FLFV2PF	Foot Valve / Strainer 2"/51mm NPSH Female *

\* See website for complete listing of accessory and related products



National Fire  
Equipment Ltd.

TORONTO: (905) 761-6355  
Toll Free: (800) 267-8508

OTTAWA: (613) 723-6071

VANCOUVER: (604) 420-1131  
Toll Free: (800)-667-2138

BURNABY: (604)-299-4498

EDMONTON: (780) 455-3870  
Toll Free: (888)-891-1008

CALGARY: (403) 236-5661

MONCTON: (506) 859-7277  
Toll Free: (877) 816-3473

MISSISSAUGA: (905) 565-1385

www.nationalfire.com



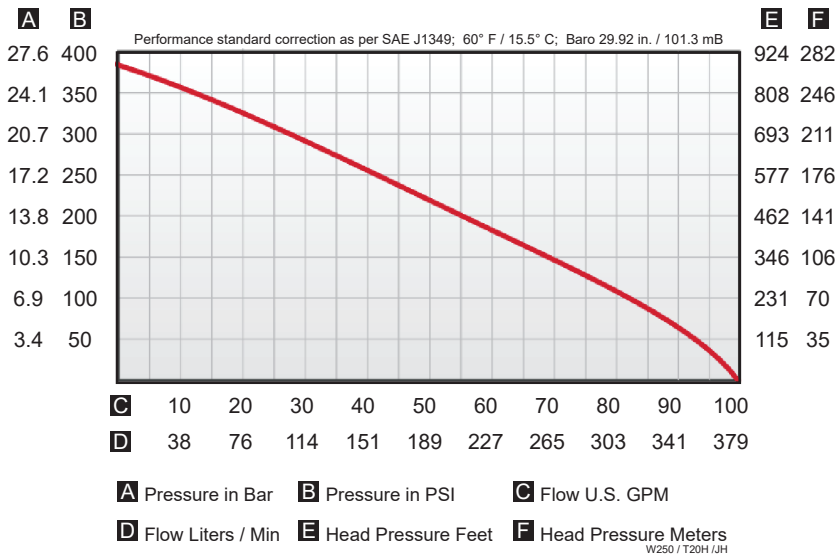


# National Fire Equipment Ltd.

## WICK 375 - 2 STROKE 4 STAGE FIRE PUMP

### PORTABLE FOUR STAGE HIGH PRESSURE FIRE PUMP

- For Emergency Rescue Equipment used by forestry and other emergency services
- The WICK® 375 is a world leader in portable high pressure fire pumps capable of moving water over long distances
- Powered by a 10 HP, 210 cc modern 2-stroke, air cooled Solo engine
- Electronic over-speed protection cut-out switch (patented)
- Detachable 4-stage foam-compatible pump using a one piece stainless steel clamp
- Nikasil cylinder wall for extended wear and low maintenance
- User friendly and easy pull starting
- Detachable rewind starter for emergency rope start
- See chart for available fuel connection models
- U.S.D.A. qualified to meet Specification 5100-274C
- Available with transportable back pack



#### WEIGHT & DIMENSIONS

Length	22.75"	57.8 cm
Width	14.25"	36.2 cm
Height	14.25"	36.2 cm
Weight	56.0 lbs	25.4 kg
Suction	2.0" NPSH	50 mm
Discharge	1.5" NPSH	38 mm

#### ENGINE

Solo	2 stroke; 210 cc; 10.0 Hp / 7.5 kw
Ignition	Flywheel magneto; solid state; breaker less
Cylinder	Nikasil cylinder wall
Lighting coil	20 Watts

Performance specifications can be subject to change without notice



National Fire  
Equipment Ltd.

TORONTO: (905) 761-6355  
Toll Free: (800) 267-8508

OTTAWA: (613) 723-6071

VANCOUVER: (604) 420-1131  
Toll Free: (800)-667-2138

BURNABY: (604)-299-4498

EDMONTON: (780) 455-3870  
Toll Free: (888)-891-1008

CALGARY: (403) 236-5661

MONCTON: (506) 859-7277  
Toll Free: (877) 816-3473

MISSISSAUGA: (905) 565-1385

www.nationalfire.com



# National Fire Equipment Ltd.

## WICK 375 - 2 STROKE 4 STAGE FIRE PUMP

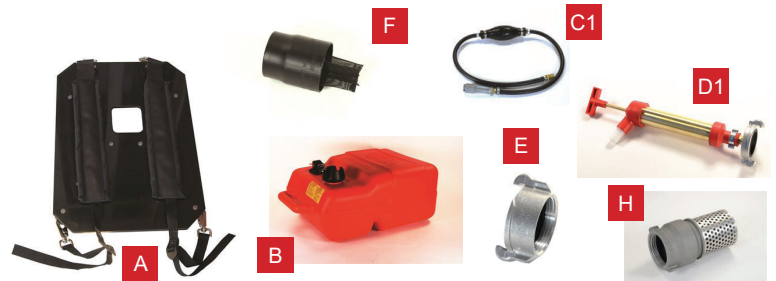
### Bid Specification

- The portable fire pump must have a 10 HP, 210cc 2-stroke Solo engine
- The pump must be equipped with an electronic over-speed protection cut-out switch
- The pump must be equipped with an electronic ignition
- The pump must not weigh more than 56 lbs / 25 Kg
- The engine cylinder walls must be Nikasil treated
- The pump must be equipped with a detachable 4 stage foam compatible pump end that is attached to the engine using a one piece stainless steel clamp
- The pump must have a detachable rewind starter for emergency rope start.
- The pump must be available with Chrysler, Mercury, SAE, Yamaha or USDA style fuel quick-connect
- The pump must be U.S.D.A. qualified to meet Specification 5100-274C. This primary coding must be at least C-60-200/40 and secondary coding must be at least C-60-175/50 and C-60-150/60
- The pump must be available with a transportable back pack.
- The pump must have minimum flow and pressures as shown in the performance chart on the opposite page



### WICK® 375

Part#	Description
71WICK375-A	WICK® 375 Fire Pump - Mercury fuel connection
71WICK375-C	WICK® 375 Fire Pump - Chrysler fuel connection
71WICK375-SAE	WICK® 375 Fire Pump - SEA fuel connection
71WICK375-Y	WICK® 375 Fire Pump - Yamaha fuel connection
71WICK375-YNZ	WICK® 375 Fire Pump - Yamaha fuel connection (New Zealand) incl Heat Shield & Spark arrestor
71WICK375-USDA	WICK® 375 Fire Pump - USDA
71WICK375-ASWD	WICK® 375 Fire Pump - Mercury fuel connection / Special Sweden



### OPTIONAL

A	71W37-HPACK	Back board for carrying
B	70FLPFT5	Fuel Tank .. 6.6 US Gal. / 25 Liters *
C1	70FLPFL-M	Fuel Line Complete (Mercury)
C2	70FLPFL	Fuel Line Complete (Chrysler)
C3	70FLPFL-Y	Fuel Line Complete (Yamaha)
C4	70FLPFL-MAN	Fuel Line Complete Mercury Female (Manitoba)
C5	70FLPFL-GSA	Fuel Line Complete with SAE swivel Female at both ends
C5	70FLPFL-NB	Fuel Line Complete with SAE swivel Female at both ends .. extended length
C6	70FLPFL-USDA	Fuel Line Complete (USDA)
D1	70FLHPPQC	Hand Primer QC
D2	70FLHPPPS	Hand Primer NPSH
D2	70FLHPPNH	Hand Primer NH
E	70FL15TPPS	Thread protector 1 1/2" / 38mm
E	70FL20TPPS	Thread protector 2" / 51mm
E	6124NM24PF	Adaptor .. 1 1/2" / 38mm NH Male x 1 1/2" / 38mm NPSH Female
F	71W37-SPKARR	Spark Arrestor
G	70FL20DLPS10	Draftlite HP suction hose .. 2"/51mm x 10'/3M c/w NPSH *
H	70FLFV2PF	Foot Valve / Strainer 2"/51mm NPSH Female *

\* See website for complete listing of accessory and related products



**National Fire  
Equipment Ltd.**

TORONTO: (905) 761-6355  
Toll Free: (800) 267-8508

OTTAWA: (613) 723-6071

VANCOUVER: (604) 420-1131  
Toll Free: (800)-667-2138

BURNABY: (604)-299-4498

EDMONTON: (780) 455-3870  
Toll Free: (888)-891-1008

CALGARY: (403) 236-5661

MONCTON: (506) 859-7277  
Toll Free: (877) 816-3473

MISSISSAUGA: (905) 565-1385

[www.nationalfire.com](http://www.nationalfire.com)

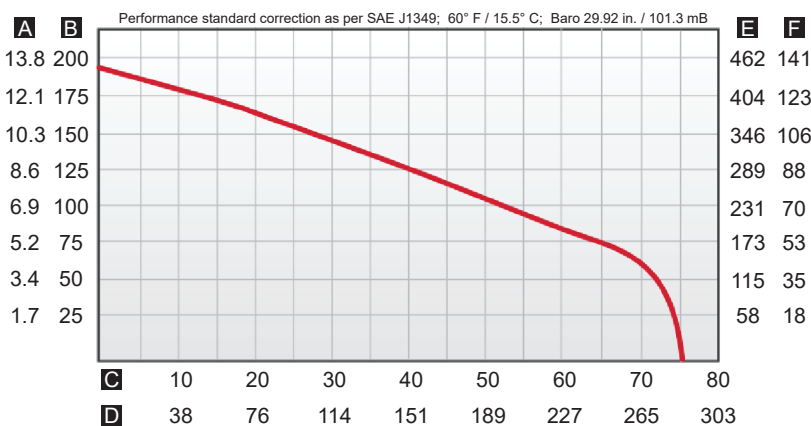


# National Fire Equipment Ltd.

## WICK FT-200 2 - STROKE PORTABLE FLOATING FIRE PUMP

### PORTABLE FLOATING HIGH PRESSURE FIRE PUMP

- The floating fire pump meets the rugged demands of forestry services and also used for marine service, dewatering, pool maintenance, environmental clean-up and irrigation.
- Unique hard anodized aluminum impeller and housing
- Automatic throttle control
- Unique electronic overspeed protection
- Pump end is designed for easy field maintenance
- Unique fuel lever gauge
- Face-type mechanical seal is standard. No adjustment required
- Built-in intake screen
- Water-resistant air cleaner and muffler
- 8 horsepower, 8.20 cu. in. (134cc) displacement, air-cooled
- Recoil hand starter
- Carburetor with integral fuel pump
- Solid-state ignition
- Electronic over-speed protection cut-out switch
- Nikasil plated cylinder bore
- Ball bearing-supported crankshaft
- Roller bearing-equipped connecting rod
- Uses unleaded gasoline and oil mixed
- Automatic float controlled throttle



**A** Pressure in Bar    **B** Pressure in PSI    **C** Flow U.S. GPM  
**D** Flow Liters / Min    **E** Head Pressure Feet    **F** Head Pressure Meters  
FT-200 A09C/JH

#### WEIGHT & DIMENSIONS

LENGTH	29.5"	74.9 CM
WIDTH	20.0"	50.8 CM
HEIGHT	16.5"	41.9 CM
WEIGHT (DRY)	43 LBS	19.5 KG
DISCHARGE	1 1/2"	38 mm NPSH*

\* Standard NPSH threads, other discharge threads available

#### ENGINE

HYDROWICK	2 STROKE
POWER	8 HP
CYLINDER	NIKASIL
IGNITION	ELECTRONIC
FUEL TANK	5 QUART 4.7 LITER

Specifications can be subject to change without notice



**National Fire  
Equipment Ltd.**

TORONTO: (905) 761-6355  
Toll Free: (800) 267-8508

OTTAWA: (613) 723-6071

VANCOUVER: (604) 420-1131  
Toll Free: (800)-667-2138

BURNABY: (604)-299-4498

EDMONTON: (780) 455-3870  
Toll Free: (888)-891-1008

CALGARY: (403) 236-5661

MONCTON: (506) 859-7277  
Toll Free: (877) 816-3473

MISSISSAUGA: (905) 565-1385

[www.nationalfire.com](http://www.nationalfire.com)



# National Fire Equipment Ltd.

## WICK FT-200 2 - STROKE PORTABLE FLOATING FIRE PUMP

### **BID SPECIFICATION FOR PORTABLE HIGH PRESSURE FLOATING PUMP**

The pump must come with the following features and meet the minimum specifications mentioned below

- Hard anodized aluminum impeller and housing
- Automatic throttle control
- Electronic overspeed protection
- Pump end design for easy field maintenance
- Fuel lever gauge
- Face-type mechanical seal
- Built-in intake screen
- Water-resistant air cleaner and muffler
- 8 horsepower, 8.20 cu. in. (134cc) displacement, air-cooled engine
- Recoil hand starter
- Carburetor with integral fuel pump
- Solid-state ignition
- Electronic over-speed protection cut-out switch
- Nikasil plated cylinder bore
- Ball bearing-supported crankshaft
- Roller bearing-equipped connecting rod
- Unleaded gasoline and oil mixed
- Automatic float controlled throttle
- The flow and pressures must meet the peak performance chart numbers shown on previous page

#### **WICK®FT-200**

PART#	DESCRIPTION
71WICKFT-200	Wick FT-200 Fire Pump



**National Fire  
Equipment Ltd.**

TORONTO: (905) 761-6355  
Toll Free: (800) 267-8508

OTTAWA: (613) 723-6071

VANCOUVER: (604) 420-1131  
Toll Free: (800)-667-2138

BURNABY: (604)-299-4498

EDMONTON: (780) 455-3870  
Toll Free: (888)-891-1008

CALGARY: (403) 236-5661

MONCTON: (506) 859-7277  
Toll Free: (877) 816-3473

MISSISSAUGA: (905) 565-1385

[www.nationalfire.com](http://www.nationalfire.com)